

# CONSTRUCTION CATALOG

VOLUME II

# Table of Contents

Bonded Abrasives . . . . .	4	Coolers & Chests		Pipe Wrenches	
Resin Bonded Abrasives		Bending & Flaring Tools . . . . .	17	HVAC Regulators and Flowmeters	
Coated Abrasives . . . . .	4	Flaring & Swaging Tool Sets		Cleaning Products . . . . .	27
Coated Disc Abrasives		Clamps & Vises. . . . .	17	Floor & Carpet Cleaners	
Coated Flap Disc Abrasives		Clamps & Spreaders		Glass Cleaners	
Non Woven Abrasives. . . . .	5	Vises		Personal Hygiene . . . . .	27
Non Woven Pad Abrasives		Files . . . . .	18	Hand Cleaners	
Wire Brush Abrasives . . . . .	5	Half Round Files		Vacuums	
End Brushes		Hammers		Waste Receptacles . . . . .	28
Scratch Brushes		Knives & Multi-Purpose Tools . . . . .	19	Trash Can Liners	
Wheel Brushes		Knife Blades		Trash Cans	
Adhesive Products . . . . .	6	Knives		Wiping Products . . . . .	28
Adhesives & Glues		Lawn & Garden Tools . . . . .	21	Towels & Wipers	
Sealing Products . . . . .	6	Shovels & Spades		Crayons. . . . .	30
Sealants		Sprayers		Markers. . . . .	30
Threadlockers		Water Hose Parts & Accessories		Pencils . . . . .	32
Tape Products. . . . .	8	Water Hoses		Soapstone Holders . . . . .	32
Electrical Tapes		Pipe Threading Equipment. . . . .	22	Soapstones. . . . .	33
Packaging Tapes		Threaders Powered		Carts & Trucks . . . . .	33
Cleaning Products . . . . .	8	Threaders Powered Accessories		Hand Trucks	
Cleaners & Degreasers		Pliers & Cutters . . . . .	23	Tilt Carts	
Leak Detectors & Penetrants. . . . .	9	Bolt & Chain Cutters		Utility Carts	
Penetrants		Locking Pliers		Flange Pins & Aligners. . . . .	33
Lubricants & Penetrants . . . . .	9	Needle Nose Pliers		Squares. . . . .	34
Anti-Seize Compounds		Specialty Pliers		Levels. . . . .	34
Fluids		Tongue & Groove Pliers		Covering Products . . . . .	34
Grease		Tubing Cutters		Tarps	
Grease Guns		Prying Tools . . . . .	24	Drain Cleaning & Inspection Equipment . .	34
Multi-Purpose Lubricants		Bars		Drain Cleaners	
Oils		Putty Knives & Scrapers . . . . .	25	Drain Cleaning & Inspection Equipment Parts & Accessories	
Paint & Paint Supplies . . . . .	12	Scrapers & Putty Knives		Compressors, Blow Guns, Hoses & Fittings. . . . .	35
Coatings		Staplers & Riveters. . . . .	25	Blow Guns	
Paint Brushes		Riveters		Batteries, Cordless Tool	
Paint Rollers & Covers		Staplers		Cordless Tool Batteries & Chargers . . . . .	36
Paint Supplies & Accessories		Tool Storage . . . . .	25		
Batteries		Tool Chests			
Paint Trays & Liners		Wrenches . . . . .	25		
Strapping Products. . . . .	16	Adjustable Wrenches			
Cable Ties		Combination Wrench Sets			

# Table of Contents

Battery Chargers		Faceshields & Visors	
Cutting Tools . . . . .	37	Hard Hat & Cap Parts & Accessories	
Band Saws		Hard Hats & Caps	
Chop & Cut-Off Saws		Welding Helmet Parts & Accessories	
Circular Saws		Heat Stress Protection . . . . .	59
Reciprocating Saws		Activity Drinks	
Drilling & Fastening Tools . . . . .	41	Sweat Bands	
Crimpers		Locking Devices . . . . .	60
Drills		Lockouts & Hasps	
Impact Drivers		Respiratory Protection . . . . .	60
Wrenches		Cartridge Respirator Parts & Accessories	
Finishing Tools . . . . .	43	Cartridge Respirators	
Grinders		Disposable Respirators	
Hammer Drilling & Demolition Tools . . . . .	45	Safety Storage . . . . .	62
Combination Hammers		Safety Can Parts & Accessories	
Rotary Hammers		Safety Cans	
Multi-Purpose Power Tools . . . . .	46	Traffic Safety . . . . .	63
Combo Kits Cordless		Safety Tapes	
Heating Tools . . . . .	46	Filler Metals . . . . .	63
Heat Guns & Torches		Welding Stick Electrodes	
Clothing Protection . . . . .	47	Gas Cutting & Welding . . . . .	63
Coveralls & Overalls		Outfits	
Rainwear		Regulators & Flowmeters	
Ear Protection . . . . .	49	Tips & Nozzles	
Earplug Parts & Accessories		Soldering & Brazing . . . . .	64
Earplugs		Soldering/Brazing Torches	
Eye Protection . . . . .	51	Torch & Weed Burners . . . . .	64
Safety Glasses		Welding & Cutting Accessories . . . . .	64
Safety Goggles		Anti-Spatter & Chemicals	
Fall Protection . . . . .	52	Centering Heads	
Lanyards		Cutting & Burning Guides	
Fire, Gas & Water Protection . . . . .	52	Cylinder & Caps	
Detectors		Rod Holders	
Fire Extinguishers		Spark Lighter & Flints	
First Aid Safety . . . . .	53	Tip Cleaners	
Eye Wash		Welding Cables & Power Cables	
Insect Repellents & Sunscreens		Welding Hoses	
First Aid Kits			
Head/Face Protection . . . . .	54		

**Honeywell**

**ITW**  
**PROBRANDS**

**AMES**  
EST. 1774®

**MSA**  
*The Safety Company*



## BONDED ABRASIVES

### Resin Bonded Abrasives



#### FLEXVOLT® Ceramic Metal Cutoff Wheels

##### Features:

- Tough durable grain with very fine crystal structure to create many more cutting edges in each grain.
- Used for the highest stock removal of metal in bonded and coated abrasives.

**Arbor Size:** 7/8 in

**Grit:** 60

**Speed:** 6600 RPM



SKU	Dia.
115-DWAFV8918	9 in

#### XP™ Ceramic Type 1 Metal Cutting Wheels

##### Features:

- Ceramic metal cutting wheels deliver aggressive material removal and a long life Ideal for cutting rod, steel plates, sheet metal, pipe, rebar, and more.

**Thickness:** 0.04 in

**Arbor Size:** 7/8 in

**Speed:** 10100 RPM



SKU	Dia.
115-DWA8953F	6 in



#### Original Slicer® Cutting Wheels

##### Features:

- Extremely fast rate of cut.
- Designed with two full layers of high strength fiberglass for safety.
- Consistent performance time after time.
- Burr-free, cool cutting.

**Thickness:** 0.040 in

**Arbor Size:** 7/8 in

**Grit:** 60

**Speed:** 10200 RPM



SKU	Tool Shape	Dia.
469-655339000	Type 1	6 in



#### Slicer Plus® High Performance Cutting Wheels

##### Features:

- Formulated to provide very long life and very aggressive cool cutting.
- Specially engineered with coated aluminum oxide proprietary bond for the toughest applications.
- Designed for delivering thicker sectional cuts in steel, stainless steel, heavy rebar and harder metals.
- Suitable for use on heavy wall pipe and angle iron.

**Thickness:** 0.045 in

**Arbor Size:** 7/8 in

**Grit:** 60

**Speed:** 10200 RPM



SKU	Tool Shape	Dia.
469-655998000	Type 1	6 in

## COATED ABRASIVES

### Coated Disc Abrasives



#### 3M™ Cubitron™ II Fibre Disc

##### Features:

- Sturdy fibre discs employ precision ceramic grain and last up to twice as long.
- Discs run cool and wear evenly.
- Can be run wet or dry.

**Abrasive Material:** Precision Shaped Ceramic

**Grit:** 36

**Body Material:** Fiber



SKU	Dia.	Arbor Diam.	Speed	Mounting
405-051141-27425	4-1/2 in	5/8 in	13300 rpm	TN
405-051141-27400	4-1/2 in	7/8 in	13300 rpm	TN
405-051141-27404	5 in	5/8 in	12000 rpm	TN
405-051141-27401*	5 in	7/8 in	12000 rpm	Center Hole
405-051141-27405	7 in	5/8 in	8600 rpm	TN
405-051141-27402*	7 in	7/8 in	8600 rpm	Center Hole



## Coated Flap Disc Abrasives



### Tiger® Big Cat® High Density Flap Discs

#### Features:

- A thicker disc with larger flaps which conforms to curved and irregular surfaces while producing a consistent finish.
- 30 to 40 percent longer life than standard flap discs.
- Ideal for a working angle less than 15 degrees.

**Speed:** 12000 rpm

**Abrasive Material:** Zirconia Alumina

**Grit:** 40

**Dia.:** 4-1/2 in



SKU	Arbor Diameter
804-50803	7/8 in
804-50808	5/8

## NON WOVEN ABRASIVES

### Non Woven Pad Abrasives

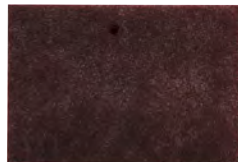


### Scotch-Brite™ Hand Pad 7447

#### Features:

- Hand pads are a great alternative to steel wool, similar performance without the shredding, rusting, or splintering.
- May be used by hand, with a hand pad block, or on an in-line sander.
- Available in a variety of grades, including aluminum oxide, nepheline syenite, or silicon carbide abrasive materials.
- 16"x9" pad

**Abrasive Material:** Aluminum Oxide



SKU	Roughness Grade
405-048011-04029	Very Fine

## WIRE BRUSH ABRASIVES

### End Brushes



### Crimped Wire Solid End Brushes

#### Features:

- Light-duty cleaning in corners and hard to reach areas.
- Solid End Construction.
- Very flexible brushing action.

**Trim Length:** 1 in

**Speed:** 22,000 RPM

**Stem Diam:** 1/4 in



SKU	Brush Diam	Wire Size
804-10021	1 in	0.006 in

### Knot Wire End Brushes

#### Features:

- Hollow-end wire brush.
- Rugged knot-type construction provides aggressive, high-impact action for severe applications.
- Ideal for cleaning in recessed areas.

**Trim Length:** 7/8 in

**Speed:** 22000 RPM

**Stem Diam:** 1/4 in



SKU	Brush Diam	Wire Size
804-10027	1-1/8 in	0.014 in
804-10028	1-1/8 in	0.020 in

### Scratch Brushes



### Hand Scratch Brushes

#### Features:

- Heavy-duty industrial brushes.
- Wire fill and length is unsurpassed.
- Durable wood handle.

**Bristle Material:** Carbon Steel

**Block Material:** Wood

**Bristle Rows:** 4 X 16



SKU	Handle Type	Handle Material
102-387	Shoe	Wood

## Wheel Brushes



## Stringer Bead Wheel Brushes

## Features:

- Very narrow face design primarily for weld cleaning and to access hard-to-reach areas.

**Arbor Diam & Thread:** 5/8 in - 11

**Bristle Diam:** 0.02 in



SKU	Bristle Material	Dia.	No. of Knots	Face Width
102-4S58S	Stainless Steel	4 in	30	1/4 in
102-4S58	Carbon Steel	4 in	30	4 in
102-6S58	Carbon Steel	6 in	48	6 in



## Roughneck® Max Stringer Bead Wheels

## Features:

- Delivers unmatched weld cleaning performance by maximizing life, efficiency, and consistency.
- Improved feel and comfort during use makes brush operation effortless.
- Stronger, sharper wire delivers consistency and performance you can count on.
- Recommended for cleaning root pass welds, surface prep, and other cleaning applications.

**Dia.:** 4 in

**No. of Knots:** 32

**Face Width:** 3/16 in

**Bristle Diam.:** 0.020 in

**Arbor Diam.:** 5/8 in - 11 UNC



SKU	Bristle Material
804-13131	Steel
804-13138	Stainless Steel

## Roughneck® Stringer Bead Wheels

## Features:

- Narrow face brush is suitable for cleaning root and hot passes.
- Effectively reaches into corners.
- Constructed from premium quality wire.

**Arbor Diam:** 5/8 in

**Face Width:** 3/16 in

**Arbor Thread:** 11 UNC

**Bristle Material:** Steel

**Bristle Diam.:** 0.020 in



SKU	Dia.	No. of Knots
804-08756	5 in	38
804-09400	6 in	56
804-09000	7 in	56

## ADHESIVE PRODUCTS

## Adhesives &amp; Glues



## 3M™ Super 77™ Multipurpose Spray Adhesive

## Features:

- Multipurpose spray adhesive bonds to many surfaces.
- Great for use in home, office and craft projects.
- Versatile, quick drying and transparent.
- Fast, permanent bond provides quick results.
- Aggressive tack provides high initial grab with enough time to position materials properly.
- Industrial sized can provides high coverage.
- Resists dripping or running when used in vertical applications.
- Also available with Low VOC.

**Adhesive Tensile Shear:** 300 psi

**Tensile Strength:** 300 psi

**Chemical Compound:** Synthetic Elastomer

**Working Time:** 15 sec to 15 min



SKU	Capacity vol.
405-021200-21210	16.75 oz

## SEALING PRODUCTS

## Sealants



## Cross-Check™ Torque Seal® Tamper-Proof Indicator Paste

## Features:

- Provides a convenient visual method for identification of vibratory loosening or tampering in nuts, bolts, fasteners, and assemblies.
- Highly visible under ambient light and fluorescent under UV light.
- Tamper-proof torque mark.
- Safe for most surfaces.
- Excellent adhesion.

**Temp. Range:** -20° F - 400° F

**Full Cure Time @ Temp.:** 1 to 2 h

**Wt.:** 0.2 lb



SKU	Capacity Vol.
253-83314	0.05 lb



## 567™ PST® Thread Sealants, High Temperature

### Features:

- Instant thread sealant for taper/taper threads and fittings.
- Great choice for high temperature and high pressure applications.
- Controlled strength for easy disassembly with hand tools.
- Prevents leaks, does not shrink, crack, creep, or shred.
- Provides excellent solvent resistance.
- Eliminates galling on stainless steel.

**Temp. Range:** -65°F - 480°F

**Full Cure Time @ Temp.:** 24 Hours @ 72° F



SKU	Capacity Vol.
442-2087067	50 mL

## Thread Sealants with PTFE

### Features:

- A general purpose sealant with the added lubricity of PTFE for metal pipes.
- Won't shred like tape and allows easy disassembly.

**Temp. Range:** -65° F - 300° F



SKU	Capacity Vol.
442-1527514	1 pt

## Threadlockers

## 242™ Threadlockers, Medium Strength

### Features:

- Medium strength, medium viscosity, methacrylate-based threadlocking adhesive offering general purpose qualities.
- Provides quick fixture times on steel, brass and stainless steel of 5, 15 and 20 min respectively.
- Thixotropic to reduce adhesive migration.

**Thread Size:** 1/4 in - 3/4 in

**Temp. Range:** -65° F - 300° F

**Curing Method:** Anaerobic



SKU	Capacity Vol.
442-135354	10 ml
442-135355	50 mL



## 243™ Medium-Strength Primerless Threadlockers

### Features:

- General purpose threadlocker that provides a medium strength bond.
- Seals and secures metal nuts and bolts to prevent loosening due to shock and vibration.
- Works on all metals, including passive substrates, such as stainless steel, aluminum, and plated surfaces.
- Proven to be tolerant of minor contamination due to industrial oils, such as motor oils, corrosion prevention oils, and cutting fluid.

**Thread Size:** 1/4 in - 3/4 in

**Temp. Range:** -65° F - 360° F

**Fix Cure Time @ Temp.:** 5 min @ 72° F

**Curing Method:** Anaerobic



SKU	Capacity Vol.
442-1329467	50 mL

## 271™ High Strength Threadlockers

### Features:

- High strength, low viscosity, red, methacrylate-based threadlocking adhesive which fluoresces under UV light to allow monitoring.
- With steel fixture time of 10 minutes, brass 5 minutes and stainless steel 15 minutes.
- Can tolerate slight contaminations of industrial oils.
- Suitable for all metal fasteners.
- Breakaway torque on M10 bolts of 26 Nm.
- Seals threads, allows through-hole tapping.

**Thread Size:** - Up to 1 in

**Temp. Range:** -65° F - 300° F

**Applications:** Threadlocking

**Curing Method:** Anaerobic



SKU	Capacity Vol.
442-135381	50 ml



## TAPE PRODUCTS

## Electrical Tapes

**Scotch****Scotch® Super 33+ Vinyl Electrical Tape****Features:**

- Premium grade tape that provides electrical insulation for all wires and cables rated up to 600 V.
- Designed for above/below grade, indoor/outdoor, low and high voltage applications, and for harnessing cables.
- Offers electrical and mechanical protection with the combination of a pressure sensitive, rubber resin adhesive and elastic, PVC backing.
- Provides a protective jacket for high voltage cable splices.
- Highly resistant to UV rays, abrasion, moisture, alkalis, solvents, and many acids.
- Compatible with solid dielectric cable insulation, synthetic cable insulations, jackets, and splicing compounds.

**Material:** Rubber-Based Adhesive; Vinyl (PVC) Backing**Thickness:** 7 mil

SKU	Length	Width
405-638060-29035	76 ft	3/4 in

**Scotch® Vinyl Color Coding Electrical Tape 35****Features:**

- Designed for use in phase identification, color coding of motor leads and piping systems and for marking safety areas.
- Flame-retardant and highly resistant to UV rays, abrasion, moisture, alkalis, solvents and many acids.
- Withstands a temperature range of 14 to 221 °F (-10 to 105 °C).
- UL Listed, VDE, CSA Certified and RoHS 2015/863/EU Compliant.

**Material:** Vinyl**Thickness:** 7 mil

SKU	Length	Width
500-108511	66 ft	3/4 in

## Packaging Tapes

**3M****3M™ VHB™ Tape 4955****Features:**

- This tape is a general purpose acrylic adhesive with a firm foam core.
- It can replace rivets, welds and screws.
- Pressure sensitive adhesive bonds on contact to provide immediate handling strength
- Allows the use of thinner, lighter weight and dissimilar materials

**Thickness:** 80 mil**Material:** Firm Foam

SKU	Width	Length
405-021200-67500	3/4 in	36 yd

## CLEANING PRODUCTS

## Cleaners &amp; Degreasers

**CRC****Brake Parts Cleaners****Features:**

- Maintaining clean brake and disc parts can improve the life of your car's braking system and keep you safe on the roads.
- Using a brake cleaner for cleaning and degreasing is a great way to maximize the performance and increase the longevity of your entire brake system.
- Formulated to quickly and effectively remove grease, brake dust, brake fluids, oils, and other contaminants from brake parts, lining, pads.
- Options available for chlorinated and non-chlorinated formulas, including non-chlorinated that is less than 45% VOC (05084), ultra low VOC that complies with SCAQMD Rule 1171 (05151), and compliant with VOC regulations for all 50 states (05050).

**Chemical Compound:** Tetrachloroethylene

SKU	Capacity Vol.
125-05089	20 oz



## Industrial Cleaners and Degreasers

### Features:

- All-purpose cleaner, degreaser and deodorizer.
- Concentrate dilutes up to 1:30.
- Easily cuts through thick grease, oils, hydraulic fluids and built-up grime on all washable surfaces.
- Non-abrasive, non-corrosive, non-flammable and VOC compliant formula.
- Safe for use in cleaning equipment including floor scrubbers, carpet cleaners and parts washers.
- Orally non-toxic and readily biodegradable formula\*.
- EPA Safer Choice product.
- Safer than caustic cleaners and solvents.

**Chemical Compound:** Ethoxylated Alcohol; Sodium Citrate; Sodium Carbonate; Citric Acid



SKU	Capacity Vol.
676-2710001213012	24 oz
676-2710200613005	1 gal

## LEAK DETECTORS & PENETRANTS

### Penetrants



## PB™ Penetrating Catalysts

### Features:

- Great for loosening rusted or frozen screws and bolts.
- Effective rust inhibitor.
- Non-evaporating lubricant.
- Penetrates into hard-to-reach areas.
- Suitable for brake, exhaust and suspension system jobs.
- Available with ProStraw™ with Control Flow Technology™ (16-PB-DS).



SKU	Capacity Vol.
108-16-PB-DS	11 oz

## LUBRICANTS & PENETRANTS

### Anti-Seize Compounds



## Food Grade Anti-Seize

### Features:

- Prevents seizure, galling, and friction in stainless steel and other metal parts.
- Used in industrial food industries and general plant maintenance.
- Metal free formulation.

**Temp. Range:** -29 °C - 400 °C

**Chemical Compound:** Mineral Oil; Calcium Dihydroxide



SKU	Capacity Wt.
442-1167237	8 oz

## LB 8008™ C5-A® Copper Based Anti-Seize Lubricants

### Features:

- Exclusive formula suspends copper and graphite in a high quality grease.
- Protects metal parts from rust, corrosion, galling, and seizing.
- Establishes greater clamp load.
- Known as Loctite® C5-A®.

**Temp. Range:** -20 °F - 1800 °F

**Chemical Compound:** Petroleum; Mineral Oil; Calcium Dihydroxide; Copper; Graphite; Quartz



SKU	Capacity Wt.
442-160796	1 lb

## Silver Grade Anti-Seize Lubricants

### Features:

- Heavy duty, temperature resistant, petroleum-based lubricant compound fortified with graphite and metallic flake.
- Inert and will not evaporate or harden in extreme cold or heat.
- For use in assemblies.

**NLGI Grade:** 1

**Temp. Range:** -15 °F - 1600 °F

**Chemical Compound:** Graphite; Mineral Oil



SKU	Capacity Wt.
442-235005	1 lb

## Corrosion Inhibitors



## Zinc-It® Instant Cold Galvanize Coatings

### Features:

- High-performance coating of >93% pure zinc that electrochemically bonds with ferrous metals to form a galvanic cell.
- It actively fights rust and corrosion.
- Use as a touch-up for damaged galvanized coatings.
- Dries quickly.
- Outdoor protection for 1 to 2 years.

**Temp. Range:** - 130° F Continuous; 150° F Intermittent

**Chemical Compound:** Acrylic

**Recommended Film Thickness:** 2 to 3 mil



SKU	Capacity Vol.
125-18412	16 oz



## LPS® 3® Premier Rust Inhibitors

### Features:

- Protects steel against rust and corrosion for up to 2 years (Indoor storage).
- 9 months outdoor storage).
- Penetrates to displace moisture.
- Resists moisture, sand, dirt, dust and vibration.
- Does not contain chlorinated solvents or silicone.
- Non-staining.
- Safe on most surfaces.

**Chemical Compound:** Petroleum

**Recommended Film Thickness:** 3 to 7 mil (Wet); 1 to 3 mil (Dry)

**Wt.:** 0.69 lb



SKU	Capacity Vol.
428-00316	11 oz

## Fluids



## Tapmatic® Edge Lube Cutting Lubricants

### Features:

- White solid waxy bar.
- Biodegradable.
- Excellent for belt, wheel, or disc grinding, and sawing applications.
- Eliminates heat build-up and belt loading.
- Does not contain any hazardous chemicals.
- Extends grinding wheel life.
- Low toxicity.

**Capacity Vol.:** 13 oz



SKU
428-43200



## Rapid Tap® Heavy Duty Cutting Fluids

### Features:

- Greatly extends tool life.
- Super-fine machined finish in operation after operation.
- Excels in tough materials.
- Contains no 1,1,1-trichloroethane or other ozone-depleting chemicals.

**Capacity Vol.:** 1 pt



SKU
618-RAPTAP-PTNEW



## EP-Xtra® Cutting Fluids

### Features:

- Outstanding performance for any cutting operation on any metal.
- Absolutely without equal on hard metals and on cuts requiring extreme pressure or long cutting times.
- Metal cutting fluid used to increase speed, extend tool life and improve cut quality

**Capacity Vol.:** 16 oz



SKU
702-10016E



## Grease



### JT-6® Hi-Temp Grease

#### Features:

- Formulated with a high dropping point for use over a wide temperature range.
- Provides excellent protection in severe service and outstanding shock load protection.

**NLGI Grade:** 2

**Temp. Range:** -10° F - 325° F

**Thickener:** Lithium Complex



### JT-6® Multi-Purpose Grease

#### Features:

- Waterproof and highly water wash resistant.
- Excellent extreme pressure properties.
- Prevents against shock loading.
- Outstanding rust and corrosion prevention.
- Very low oil separation rate.
- Light colored and low staining.
- Good oxidation resistance.

**NLGI Grade:** 2

**Temp. Range:** 0° F - 250° F

**Thickener:** Anhydrous Calcium



SKU	Capacity Vol.
122-665005002080	14 oz

## Grease Guns



### Lever Type Heavy-Duty Grease Guns

#### Features:

- Flip-over follower is set for cartridge use.
- Extra-heavy follower spring insures positive priming and uninterrupted pumping action.

**Outlet Type:** 6 in Extension/Coupler

**Designated Fluid:** Grease



SKU	Capacity Vol.	Operating Pressure
438-1142	16 oz Bulk; 14.5 oz Cartridge	6000 psi



### M18™ Cordless 2-Speed Grease Guns



#### Features:

- Pre-set grease counter dial.
- Flexible hose offers greater access to difficult to reach fittings.
- Air bleeder valve for quick priming.
- Lock-on/Lock-off trigger delivers added user convenience.

**Outlet Type:** 48 in Hose/Coupler

**Capacity Vol.:** 16 oz

**Type:** 10,000 psi

SKU	Includes
495-2646-22CT	(2) M18™ REDLITHIUM™ Compact Battery; 48 in Flex Hose w/Spring Guard; Soft Carrying Case; High Pressure Grease Coupler; M18™ & M12™ Multi-Voltage Charger; M18™ Cordless 2-Speed Grease Gun; Shoulder Strap
495-2646-20	Tool Only

## Multi-Purpose Lubricants



### 1® Premium Lubricants

#### Features:

- Provides a dry, thin, lubricating film.
- Resists oil, dust, and dirt build-up.
- Ideal for delicate mechanisms.
- Removes carbon build-up from surfaces.
- Displaces moisture.
- Safe on paint, fabric, and most plastics.
- Used world-wide in aviation.
- VOC compliant in all 50 states.

**Chemical Compound:** Petroleum



SKU	Capacity Vol.
428-00116	11 oz

## Oils



## Marvel® Air Tool Oils

## Features:

- Specially formulated for use in all piston type and rotary air tools, as well as in-line air lubricators.
- Prevents rust formation while providing positive lubrication for smooth starting and longer tool life.
- Assures maximum performance by dissolving gum and sludge that cut down tool speed and reduce power output.



SKU	Capacity Vol.
465-MM085R1	32 oz

## RIDGID

## Thread Cutting Oils

## Features:

- Cools threads and pipe during operation.
- Speeds metal removal.
- Improves thread quality.
- Reduces threading torque.
- Free of chlorine and other halogens, PCBs and heavy metals (complete MSDS available).

Container Size: 1 gal

Flash Point: 385° F



SKU	Color
632-70830	Black
632-70835	Yellow



## Multi-Purpose Lubricants

## Features:

- Lubricating ingredients are widely dispersed and hold firmly to all moving parts.
- Dissolves adhesives, allowing easy removal of labels, tape, stickers, and excess bonding material.
- Protects metal surfaces with corrosion-resistant ingredients to shield against moisture and other corrosive elements.
- Loosens rust-to-metal bonds and frees stuck, frozen or rusted metal parts.
- Product displaces moisture quickly and dries out electrical systems to eliminate moisture-induced short circuits.

Temp. Range: -50 °F - 300 °F



SKU	Capacity Vol.	Packing Type	Flash Point
780-490026	8 oz	Aerosol Can	122° F
780-490040	11 oz	Aerosol Can	131° F
780-490057	12 oz	Aerosol Can	131° F
780-490088	16 oz	Aerosol Can	122° F
780-490118	1 gal	Canister	122° F

## PAINT &amp; PAINT SUPPLIES

## Coatings



## Bright Zinc Galvanizing Primers

## Features:

- Reduced M.I.G. weld spattering.
- Prevents rust and corrosion.
- Protects welded surfaces.
- Repairs Hot Dip Galvanizing with brighter finish.
- Will not blister or burn away.



SKU	Capacity Vol.
905-RW109B-12	12.75 oz

## Paint Brushes



### Acid Brushes

#### Features:

- Lightweight and disposable brush.
- Convenient for cleaning electrical contact points or debris in hard-to-reach spaces.
- Features tin shaft with horsehair bristles.

**Trim Length:** 3/4 in

**Bristle Material:** Black Horsehair

**Handle Material:** Tin Ferrule



SKU	Brush Width	Thickness
102-AB-26	5/16 in	1/4 in



### Acme Chip Paint Brushes

#### Features:

- White China bristle.
- Tin-plated Steel ferrule.
- Unfinished wood handle.

**Trim Length:** 1-1/2 in



SKU	Brush Width
912-0F51170020	2 in

### Amber Fong® Paint Brushes

#### Features:

- Soft, amber brown bristles provide a smooth finish with all oil-based enamels, varnishes & stains.
- Brown China bristle, chisel trim.
- Brass-plated steel ferrule.
- Pearl-yellow, solid plastic handle.

**Trim Length:** 2-7/16 in

**Bristle Material:** China bristle

**Handle Material:** Plastic



SKU	Brush Width
912-0011230020	2 in



### Camel Hair Artists Brushes

#### Features:

- Artist brushes are used to apply paint or sometimes ink to small areas.
- Thicker ones are used for filling in, and thinner ones are used for touching up details.

**Bristle Material:** Camel hair

**Handle Material:** Wood

SKU	Trim Length
912-0F16280010	9 mm
912-0F16280020	11 mm
912-0F16280030	12.5 mm
912-0F16280040	16 mm
912-0F16280050	17.5 mm
912-0F16280060	17.5 mm



### Red Sable Artists Brushes

#### Features:

- Red sable, red handle.
- For oils and acrylics.

**Bristle Material:** Red Sable

**Handle Material:** Wood

SKU	Trim Length
912-0F16210030	7 mm
912-0F16270020	10.5 mm

### Silver Tip® Paint Brushes

#### Features:

- White & silver CT™ polyester filaments for excellent leveling & smoothing.
- Very soft formulation, feather stroke.
- Rust-resistant ferrule.
- Hardwood handle.

**Bristle Material:** Polyester

**Handle Material:** wood



SKU	Brush Width	Trim Length
912-0052210020	2 in	2-5/8 in
912-0052200020	2 in	2-5/8 in
912-0052210024	2-1/2 in	2-7/8 in
912-0052210030	3 in	2-7/8 in





## Soft Tip® Paint Brushes

### Features:

- Synthetic blend for all paints, latex- & oil-based.
- Soft brush tips provide a smooth, even finish.
- Brass-plated steel ferrule.
- Pearl-yellow, solid plastic handle.

**Bristle Material:** Synthetic blend

**Handle Material:** plastic



SKU	Brush Width	Trim Length
912-0Q31080010	1 in	2-3/16 in
912-0Q31080020	2 in	2-7/16 in

## Ultra/Pro Paint Brushes

### Features:

- Made with Purple/Black nylon and or sable polyester.
- Stainless steel ferrule.
- Sealed wood handle.

**Bristle Material:** Nylon/polyester



SKU	Brush Width	Trim Length	Handle Material
912-0041870020	2 in	2-3/8 in	Rubberized
912-0041740020	2 in	2-5/8 in	Wood

## Yachtsman® Paint Brushes

### Features:

- White China bristle, chisel construction.
- Soft formulation, velvet feel.
- Round, brass-plated steel ferrule.
- Black solid plastic handle.

**Trim Length:** 2-15/16 in

**Bristle Material:** China bristle

**Handle Material:** plastic



SKU	Brush Width
912-0Z11200030	3 in

## Paint Rollers & Covers



## Adhesive Applicators

### Features:

- Extra-short white fabric provides smooth application of all adhesives and epoxies, water-based or solvent-based.
- Use on wallcoverings, fiberglass, paneling, floor tile.
- Polypropylene core resists water, solvents, and cracking.

**Nap Length:** 1/8 in



SKU	Size	Width
912-00R2450090	9 in	9 in

## American Contractor® Roller Covers

### Features:

- First choice for value & performance in a production cover, excellent paint pickup & release.
- Made in America quality, use with all paints (flat, eggshell, satin).
- Double-thick polypropylene core resists water, solvents & cracking.

**Nap Length:** 1/2 in



SKU	Size	Width
912-00R5630090	9 in	9 in

## Magikage® Trafficage Roller Frames

### Features:

- Ideal for lines, edging & trim work.
- Galvanized shank.
- Sturdy wire cage maintains roller cover shape for smooth application.
- Compatible with standard threaded extension poles.



SKU	Width
912-00R0220040	4 in



## Mini-Koter® Frames

### Features:

- Plastic threaded grip.
- For both 4 in and 6 in Mini-Koter® rollers.



SKU	Width
912-00R0110040	4 in

## Pro/Doo-Z® Jumbo-Koter® Mini Roller Covers

### Features:

- All paints, enamels, primers, urethanes and epoxies.
- Highly versatile for most applications.
- Proprietary woven fabric.
- Use with any Jumbo-Koter® frame.

**Nap Length:** 3/8 in



SKU	Width
912-00R3020044	4-1/2 in

## Shed-Resistant Woven Mini-Koter® Mini Roller Covers

### Features:

- Perfect for small areas in tight spaces.
- Shed-resistant.
- Offers a smooth finish with all paints and enamels.
- Use with R011, R012 or R024 rod frame.

**Nap Length:** 3/8 in



SKU	Width
912-00R2220040	4 in



## Sherlock® Roller Frames

### Features:

- Quick-release retaining spring locks roller in place, yet allows easy, one-rap removal.
- Smooth-rolling bearings eliminate shank wear and gray streaks.
- Durable, green fiberglass-reinforced nylon cage and endcaps.
- Chrome-plated 5/16 in shank, 90° angle.
- Full-size polypropylene grip with reinforced threads, Sherlock GT compatible.



SKU	Width
912-00R0170090	9 in

## Super Doo-Z® Roller Covers

### Features:

- Shed-resistant, white fabric for a virtually lint-free finish with all paints, enamels, varnishes (satin, semigloss and gloss).
- Dense fibers reduce dripping and spatter.

**Nap Length:** 3/8 in



SKU	Width
912-00R2050040	4 in
912-00R2050090	9 in

## Paint Supplies & Accessories



## Acme Deluxe Grids

### Features:

- High-quality expanded steel wire, bright galvanized finish.
- Reinforced edges on all sides.



SKU	Used With
912-0F00010000	5 Gallon bucket



## Sherlock® Extension Poles

### Features:

- Universal zinc, die-cast threaded tip works with all popular tools.
- Hexagonal aluminum inner pole prevents twisting; rugged fiberglass outer pole.
- Easily adjusts in 6 in increments with a touch of the thumb, then locks securely in place.

**Material:** Aluminum

SKU
912-00R0560000
912-00R0570000
912-00R0550000

## Paint Trays & Liners



## Deluxe Trays and Liners

### Features:

- Trays feature sturdy, ribbed roll-off area for even loading.
- Liners are rigid, form-fitting and made of clear PET.



SKU	Capacity Vol.	Material
912-00R4060110	1 qt	PET a recycled plastic

## Batteries

### DURACELL®

## Procell® Batteries

### Features:

- AA, AAA, C and D batteries are guaranteed for 7 years in storage, 9V batteries are guaranteed for 5 years in storage.
- Recommended for scheduled battery replacement programs.
- Economically packaged in bulk and individually date-coded for effective inventory management.

**Battery Type:** Non-Rechargeable Dry Cell Alkaline



SKU	Batt. Size	Voltage	Quantity
243-PC1500BKD	AA	1.5 V	24 Batteries per pack
243-PC2400BKD	AAA	1.5 V	24 Batteries per pack
243-PC1400	C	1.5 V	12 Batteries per pack
243-PC1300	D	1.5 V	12 Batteries per pack
243-PC1604BKD	9.0 V	9V	12 Batteries per pack

## Energizer

## Industrial Alkaline Batteries



### Features:

- Designed for industrial, professional use.
- Long-lasting power source.
- Batteries operate well in extreme conditions.
- Date-coded and 100% mercury-free.

**Voltage:** 1.5 V

SKU	Batt. Size	Quantity
827-EN92	AAA	24 Batteries per pack
827-EN91	AA	24 Batteries per pack

## STRAPPING PRODUCTS

### Cable Ties



## General Purpose Cable Ties

### Features:

- Nylon 6/6 features light weight, high strength and a wide temperature range.
- Even at higher than recommended temperatures or exposure to flame, nylon does not give off toxic or irritating by-products.

**Thickness:** 0.054 in

**Tensile Strength:** 50 lb

**Bundle Diam:** 2 in

**Material:** Nylon 6/6



SKU	Length	Width
102-750GRN	7.6 in	0.18 in

## Metal Detectable Cable Ties

### Features:

- Impregnated with metal flakes for contamination prevention.
- Teal blue color for easy identification.

**Color:** Teal

**Material:** Nylon 6/6; Metal



SKU	Length	Width	Thickness	Tensile Strength
102-418MD	4.1 in	0.096 in	0.035 in	18 lb
102-750MD-B	7.6 in	0.18 in	0.054 in	50 lb
102-750MD	7.6 in	0.18 in	0.054 in	50 lb
102-1150MD	11.1 in	0.18 in	0.054 in	50 lb





## UV Stabilized Cable Ties

### Features:

- General purpose use.
- Nylon 6/6 features light weight, high strength and a wide temperature range.
- Contains increased resistance to UV light (does not totally eliminate the destructive effects of the light).

**Thickness:** 0.054 in

**Tensile Strength:** 50 lb

**Material:** Nylon 6/6

**Width:** 0.18 in



SKU	Length	Bundle Diam
102-1150UVB	11.1 in	3 in
102-1450UVB	14.6 in	4 in

## Coolers & Chests



## 400 Series Coolers

### Features:

- Ultratherm® insulation for maximum cold retention and maintains ice for up to 3 days in temperatures as high as 90°F.
- HDPE hide won't chip, peel, buckle, or rust.
- UV stabilizers prevent fading, cracking in all exposures.
- Front push-button spigot is drip-resistant.
- White FDA Grade liner is easy-to-clean and resists stains and odors.
- Wide mouth pressure fit lid for easy filling.
- Keeper cord prevents lid loss.



SKU	Width	Length	Height
385-451	13 in	14-1/2 in	20.38 in
385-431	13-1/2 in	13-1/2 in	14 in
385-4101	15-7/8 in	17-1/2 in	23-1/4 in

## BENDING & FLARING TOOLS

### Flaring & Swaging Tool Sets



## Cutting Flaring and Swaging Kits

### Features:

- Flaring and swaging tools allow a pipe fitter to adapt their materials to better suit their needs.
- For Soft Copper, Aluminum, Steel, Stainless Steel and Brass Tubing



SKU	Flaring Angle
389-275-FSCD	45°

## CLAMPS & VISES

### Clamps & Spreaders



## Drop Forged C-Clamps

### Features:

- Extra throat depth.
- Non-slip clamping on all shapes.
- Steel spindles are copper plated for spatter protection.
- Swivel pads adjust freely to bear evenly on clamped part.
- Individually boxed for easy storage and protection.

**Spindle Dia:** 3/4 in

**Body Material:** Drop Forged Steel

**Handle Type:** Sliding Pin

**Handle Material:** Steel



SKU	Opening Size	Overall Length	Throat Depth	Pressure
102-404C	3-1/4 in	4 in	3-1/4 in	6,200 lb
102-406C	6-1/16 in	6 in	4-1/8 in	6,900 lb
102-408C	8-1/4 in	8 in	5 in	6,600 lb
102-410C	12-1/4 in	10 in	6 in	8,000 lb

## Locking C-Clamps

### Features:

- Easy to lock.
- Easy to release.

**Throat Depth:** 2.625 in

**Body Material:** Alloy Steel



SKU	Opening Size	Overall Length
100-AB-11RI	3-3/4 in	11 in



## Locking C-Clamps with Swivel Pads



### Features:

- Wide-opening jaws provide greater versatility.
- Swivel pads hold tapered work, awkward fabricating jobs, and delicate projects.
- Turn screw to adjust pressure and fit.
- Constructed of high-grade heat-treated alloy steel.
- Guarded release trigger quickly unlocks and protects from accidental release.

**Throat Depth:** 2-5/8 in

SKU	Overall Length
586-11SP	11 in

## The Original™ Locking C-Clamps with Regular Tips



### Features:

- Wide-opening jaws provide greater versatility in clamping a variety of shapes.
- Turn screw to adjust pressure and fit.
- Constructed of high-grade heat-treated alloy steel.
- Classic trigger release designed to provide maximum locking force.

**Pressure:** Adjustable Turn Screw

**Material:** Heat-Treated Alloy Steel

**Handle Type:** Vise-Grip Release

SKU	Opening Size	Overall Length	Throat Depth
586-6R	2-1/8 in	6 in	1-1/2 in
586-11R	4 in	11 in	2-5/8 in

## Vises



## TRISTAND® Portable Chain Vises



### Features:

- Optimized base for more working area.
- Benders are located at the rear of the base and three tool hangers are provided.
- Integrated ground lug provides a conductive surface to connect the weld ground.
- Leg chain retains legs even when subjected to rugged use during operation and transport.
- Rugged tool tray offers prolonged stability before requiring a leg adjustment.

SKU	Pipe Cap.	Material
632-36273	1/8 in - 6 in	Ductile Iron Work Surface; Hardened Steel Jaws and Tubular Legs

## FILES

### Half Round Files



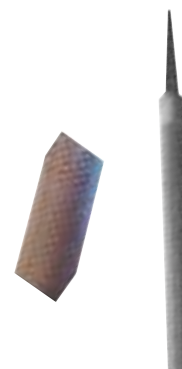
## Bastard Files

### Features:

- Manufactured from the finest materials and properly heat treated to produce outstanding quality.
- Versatile applications for concave, convex or flush surfaces.
- Double-cut flat side.
- Handy for filing down sharp edges.

**Tooth Pattern:** Flat - Double Cut

**Tool Shape:** Taper to Point



SKU	Cut Type	Length
100-14HRBF	Bastard Cut	14 in

## HAMMERS, SLEDGES, MALLETS & AXES

### Hammers



## Chipping Hammers

### Features:

- Hammer heads are hardened to precisely controlled temperatures for durability and strength.
- Wide-blade design removes slag faster and adds to the life of the tool.
- Drop forged, heat-treated, hardened head withstands more grinds.
- Well balanced handle grip for comfort and ease-of-use.

**Handle Material:** Steel

**Head Material:** Forged Steel

**Head Length:** 6 in



SKU	Overall Length	Handle Type
900-CH-200	11 in	Spring

**TRUE TEMPER**

## Toughstrike American Hickory Engineer Hammers

### Features:

- American hickory handle reduces shock.
- Double-face forged steel hammer head for maximum durability.
- Wedge/ring connection for trusted head retention.
- Used for heavy hammering, light demolition work, and driving spikes/wedges.

**Handle Length:** 15 in

**Grip Style:** Bare Wood

**Handle Material:** American Hickory



SKU	Head Weight
027-20184300	3 lb
027-20184600	4 lb

## Toughstrike American Hickory Sledge Hammers

### Features:

- American hickory handle reduces shock.
- Double-face forged steel hammer head for maximum durability.
- Overstrike protection to prevent handle breakage.
- Wedge/ring connection for trusted head retention.
- Used for heavy demolition work and driving spikes/wedges.

**Handle Type:** Wood

**Grip Style:** Bare Wood

**Handle Material:** American Hickory



SKU	Head Weight	Handle Length
027-20185000	8 lb	36 in

## Toughstrike Fiberglass Engineer Hammers

### Features:

- Fiberglass handle for increased handle strength.
- Double-face forged steel hammer head for maximum durability.
- Overstrike protection to prevent handle breakage.
- Epoxy connection for trusted head retention.
- Used for heavy hammering, light demolition work, and driving spikes/wedges.

**Handle Type:** Fiberglass

**Grip Style:** Comfort Grip

**Handle Material:** Fiberglass



SKU	Head Weight	Handle Length
027-20184500	4 lb	15 in

## KNIVES & MULTI-PURPOSE TOOLS

### Knife Blades



## Blade Dispenser Containers

### Features:

- Dispenses one blade at a time.
- Fits AB-99 and AB-2600.
- Fits most utility knives.

**No. of Cutting Edges:** 1

**Quantity:** 100 Blades per dispenser



SKU	Blade Shape	Blade Tip Shape
102-AB-11-100	Trapezoid	Straight Edge

### Knives

## Retractable Blade Utility Knives

### Features:

- Features a multi-stop button and retractable blade to help minimize injuries in the workplace.
- Used with Anchor Brand replacement blades AB-11-100.

**Blade Length:** 1 in

**Blade Material:** Steel

**Handle Material:** Zinc Alloy

**Blade Tip Shape:** Triangular

**Handle Type:** Straight

**Includes:** Five blades

**Height:** 1.25 in

**Width:** 1-3/4 in



SKU	Handle Length	Overall Length
102-AB-99	6 in	7 in



# RAZOR-BACK®

PROFESSIONAL TOOLS

## THE RECOGNIZED LEADER IN PROFESSIONAL JOB SITE TOOLS

Since 1936, Razor-Back Professional Tools have been in the hands that tackle the toughest jobs known to man.



### WHEN SAFETY MATTERS

Steel-anchored core for maximum security and head retention.



### ARMOR D-GRIP

Built for heavy jobs, steel encases hardwood and prevents twisting.



### BUILT TO LAST

Strong tempered, industrial-gauge steel.



### MADE TOUGH

One-piece forged steel head, steel ferrules for long life.

**LIMITED LIFETIME WARRANTY**





## LAWN &amp; GARDEN TOOLS

## Shovels &amp; Spades

**TRUE TEMPER****Eagle™ Shovels****Features:**

- Steel collar for added strength at the handle/socket connection.
- Lightweight fiberglass handle resists splintering, cracking, and weathering.

**Blade Type:** Open-Back**Blade No.:** #2**Handle Material:** White Ash**Blade Material:** Steel

SKU	Blade Length	Blade Width
027-1554500	10-1/2 in	9 in
027-1554300	11 in	8-1/4 in

**UnionTools****Round Point Shovels****Features:**

- Dura-Torque® crimp collar for super-strong head-to-handle connection.
- This shovel is of good quality and designed for light-to medium-duty jobs or for occasional users.
- Heavy duty blade.
- Ash Handle.

**Blade Type:** Forward Turned-Step; Open-Back**Blade No.:** #2**Blade Material:** Steel**Socket Length:** 9 in

SKU	Blade Length	Blade Width
760-40191	11.5 in	9.25 in

**Square Point Transfer Shovels****Features:**

- Perfect for moving loose garden material, sand, top soil, or debris.
- Can also be used to shape beds, mix concrete, level off areas that need to be flat, or to scrape stubborn material off driveways or other hard surfaces.
- Options available for poly D-Grip short handled and long handled shovels.

**Blade Type:** Forward Turned-Step; Open-Back**Blade No.:** #2**Handle Type:** Straight**Handle Material:** North American Hardwood**Blade Material:** Steel**Socket Length:** 9 in

SKU	Blade Length	Blade Width
760-40184	11.5 in	9.25 in

## Sprayers

**CHAPIN**  
COVER MORE GROUND**3.5 gal Industrial Concrete Open Head Sprayers****Features:**

- Tri-Poxy lined steel tank provides triple protection against rust, corrosion and damage from denting.
- Featuring a large 4 in-wide mouth opening for easy filling and cleaning.
- Chemical-resistant seals and gaskets designed to handle a variety of chemicals.
- Brass pump, wand, nozzle and shut-off with lock-on feature.
- Reinforced hose with thread fittings.

**Operating Pressure:** 40 to 60 psi**Extension Type:** Brass Wand**Hose Length:** 48 in**Pump Type:** Piston with Chemical-Resistant Seals and Gaskets**Handle Type:** Tri-Lock Cap; Ergo**Nozzle Type:** Brass Fan-Tip**Body Material:** Tri-Poxy® Steel**Mounting:** Hand Held**Includes:** Tank; Brass Wand; Reinforced Hose

SKU	Capacity Vol.	Extension Length
139-1949	3-1/2 gal	24 in

## Water Hose Parts &amp; Accessories

**Gilmour**  
GARDENING INNOVATION**Metal Nozzles****Features:**

- Hold-open clip for continuous spraying.
- Self-adjusting "duck" packing for lifetime leak proof seal.
- Metal construction built for frequent use.
- Threaded front for adding attachments.

**Handle Type:** Pistol Grip**Body Material:** Metal**Nozzle Type:** Classic

SKU	Type	Style
305-857302-1011	Rear Control	Full Size



## Water Hoses



## Pro-Flow™ Commercial Duty Hoses

## Features:

- Octagonal heavy-duty crushproof couplings.
- Continuous flow tube keeps water flowing even if kinked.
- Metal spring collar prevents kinking at faucet.
- Anti-bacterial lining prevents deterioration and extends hose life.

**Operating Pressure:** 450 psi

**Reinforcement:** PVC



SKU	Inside Diam	Length
027-4003600	5/8 in	50 ft

## PIPE THREADING EQUIPMENT

## Threaders Powered



## Model 1224 Threading Machines

## Features:

- An induction motor helps minimize noise.
- Reverse/Off/Forward, heavy-duty rotary-type and integral foot switch.
- Cam action, rear centering device.
- Two-speed gear box with a 3:1 ratio.
- Hammer-type chuck with replaceable rocker-action jaw inserts.
- Self-priming, gerotor-type, automatic-reversing, constant-flow oiling pump.
- Constant and proper lubrication of dies and workpiece with through-head oiling.
- Can be used with Model 161, 4 inch to 6 inch (sold separately).
- Choose from 1224 Threading Machine only (29858) or 1224 Threading Machines (26092, 26097).

**Speed:** 36/12 RPM

**Amps:** 15 A

**Power Cap.:** 1-1/2 hp

**Phase:** Single

**Includes:** (1) 1/4 in to 4 in NPT Hammer Chuck Machine; (1) No. 714 (914) 2-1/2 in to 4 in Receding Self-Opening Die Head; (1) No. 711 (911) 1/4 in to 2 in Universal Self-Opening Die Head; (1) No. 764 Cutter; (1) No. 744 Reamer; (3) Sets of Dies (1/2 in to 4 in); (1) gal Premium Oil; (1) F229 Spare Wheel; (1) No. 744 Cutter and No. 764 Cutter; (3) Hex Keys; 1-3/4 in Combination Wrench; (1) Tool Box



SKU	Pipe Cap.	Voltage
632-26092	1/4 in at 36 RPM; 2-1/2 in at 12 RPM - 2 in at 36 RPM; 4 in at 12 RPM	120 V AC



## Model 300 Power Drive Threading Machines

## Features:

- Cam-action rear centering device turns with chuck.
- Two heavy-duty support bars.
- Speed grip chuck with replaceable jaw inserts.
- Forward/Off/Reverse switch and integral On/Off foot switch.
- Lightweight, portable design.
- Self-contained oil system with adjustable flow control.
- Ideal for use with RIDGID® roll groovers.
- Convert to portable threading machine with Model 141, 2-1/2 inch to 4 inch (36620), and Model 161, 4 inch to 6 inch (36630), both Sold Separately.
- Choose from 300 Power Drive Complete (15682 and 15722) or 300 Power Drive Only (41855 and 75075).

**Speed:** 36 RPM

**Amps:** 15 A

**Power Cap.:** 1/2 hp

**Phase:** Single

**Includes:** (1) 300PD, Tool Only, 115V 25-60Hz 38 RPM NPT (41855); ; (1) 300PD Clip-On Tool Tray (22638); (1) 811A 1/8 in to 2 in NPT Die Head, Self-Opening, RH (97065); (1) 1/2 in to 3/4 in Universal Alloy Die Set (47745); (1) 1 in to 2 in Universal Alloy Die Set (47750); (1) 360 Cutter Assy (42370); (1) 311 Carriage with Lever (68815); (1) #32 Transport Cart (42575); (1) 341 Reamer Assy (42365); (1) 1206 Stand (42360); (1) Oiler with One Gallon Premium Thread Cutting Oil (10883)



SKU	Pipe Cap.	Voltage
632-15682	1/8 in - 2 in	115 V AC

## Threaders Powered Accessories

## Pipe Dies for Machine Die Heads

## Features:

- Strong and durable pipe dies for use in universal die heads.
- Applicable to a wide variety of die heads.
- A convenient replacement to keep systems functioning for longer.

**Pipe Cap.:** 1 in - 2 in



SKU	For Model
632-47770	Universal Die Heads Nos 504A/711/713/811A/815A/816/817/842

## RIDGID

### Power Threading Die Heads for 2 in Threading Machines

#### Features:

- All die heads are through-head oiling.
- No 500A Die Head replaces the No 500 Mono Die Heads.
- Individual machine die heads do not include dies.

**Pipe Cap.:** 1/8 in - 2 in

**Used With:** Compact Threading Machine; Power Threading Machine



SKU	For Model
632-97065	1215, 1233, 535, 535A, 300 Compact Machines and 300 Power Drive

### V-Head Pipe Stands

#### Features:

- V Head pipe stand.
- Locking ring allows for quick vertical height adjustments.
- Durable steel construction.

**Height Adjustment:** 28 in - 53 in

**Pipe Cap.:** - Up to 12 in

**Wt. Cap.:** 2500 lb

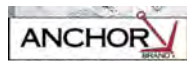
**Used With:** Roll Groovers; Threading Machines



SKU
632-56662

## PLIERS & CUTTERS

### Bolt & Chain Cutters



### Bolt Cutters

#### Features:

- Slip resistant handles.
- Internal cam mechanism provides greater torque.
- Hardened steel jaw and blades for a clean cut.

**Hardness:** 42 HRC

**Cut Type:** Center Cut

**Jaw Material:** Forged Alloy Steel

**Handle Type:** Rubber Grips

**Handle Material:** Rubber; Steel

**Applicable Materials:** Steel



SKU	Cutting Cap.	Overall Length
103-39-018	5/16 in	18 in
103-39-024	3/8 in	24 in

## Locking Pliers



### WISE-GRIP® Straight Jaw Locking Pliers

#### Features:

- Straight jaws provide maximum contact on flat, square, or hex work.
- Ideal for tightening, clamping, twisting and turning.

**Throat Depth:** 1-3/4 in

**Material:** Alloy Steel



SKU	Jaw Opening	Overall Length
586-10R-3	1-5/8 in	10 in

### WISE-GRIP® The Original™ Curved Jaw Locking Pliers with Wire Cutters

#### Features:

- Curved jaw puts tremendous pressure on four points of any style nut or bolt head.
- Includes convenient wire cutter.
- Constructed of high-grade heat-treated alloy steel for maximum toughness and durability.
- Guarded release trigger quickly unlocks and protects from accidental release.
- Turn screw to adjust pressure and fit, stays adjusted for repetitive use.
- Hardened teeth are designed to grip from any angle.
- Hex key adjusting screw offers controlled release and draws materials tightly together.

**Throat Depth:** 2-5/8 in

**Material:** Alloy Steel



SKU	Jaw Opening	Overall Length
586-10WR-3	1-7/8 in	10 in

## Needle Nose Pliers



## Solid Joint Long Nose Pliers

## Features:

- Hardened and tempered.
- Comfort grip handle and broached jaws.

**Jaw Width:** Tapered

**Handle Color:** Red/Black

**Handle Type:** Matte Finish Cushion Grips

**Finish:** Fully Polished

**Material:** Drop Forged Steel



SKU	Jaw Length	Jaw Thickness	Overall Length	Cutting Length	Point Thickness
103-10-206	2 in	5/16 in	6 in	0.6 in	1/8 in
103-10-208	2-3/4 in	3/4 in	8 in	0.8 in	27/64 in

## Specialty Pliers



## MIG Welding Pliers

## Features:

- Strong, sharp welding pliers is a must tool for mig welding operations.
- Multipurpose tool with 8 functions resulting in more efficient time and production.
- Durable carbon steel construction paired with an easy to use spring operated handle.

**Jaw Shape:** Double-Edged

**Material:** Carbon Steel



SKU	Overall Length	Wire Diam
900-YS-50	21 cm	0.8 mm - 1.5 mm

## Tongue &amp; Groove Pliers



## Tongue and Groove Pliers

## Features:

- CHANNELLOCK BLUE® grips for comfort.
- Undercut tongue and groove design won't slip.
- Patented reinforcing edge minimizes stress breakage.
- PermaLock® fastener eliminates nut and bolt failure.
- Choose from a variety of Straight, Smooth, or V-Jaw styles.



SKU	Overall Length	Jaw Opening	Jaw Length	Jaw Shape	No. of Adjustments
140-420-BULK	9.50 in	1.50 in	1.12 in	420° Straight	5
140-430-BULK	10 in	2 in	1.38 in	430° Straight	7
140-440-BULK	12 in	2.25 in	1.50 in	440° Straight	7
140-460-BULK	16.50 in	3.75 in	2.56 in	460° Straight	8
140-480-BULK	20.25 in	5.50 in	3 in	Bigazz® Straight	12

## Tubing Cutters



## Quick-Acting Tubing Cutters

## Features:

- X-CEL® Knob cuts tubing more quickly and easily with a larger, more ergonomic design.
- X-CEL® Wheel Pin, ball detent design, allows users to change cutter wheel quickly, no tool needed.
- Available in models for plastic pipe or metallic tubing.
- Models 151 through 156 feature a quick-acting design, I-beam construction, hardened wear surfaces, and thrust bearing slide assemblies for smooth operation.
- Models 151 and 152 feature fold-away reamers.
- Model 151-ML is suitable for cutting multi-layer tubing.

**Cutting Cap.:** 1/4 in - 1-5/8 in

**Includes:** Fold-Away Reamer; Spare Cutter Wheel Stored in Knob

**Cut Type:** 151 Quick-Acting Tubing Cutter

**Handle Type:** Knob



SKU
632-31632

## PRYING TOOLS

## Bars



## Pinch Point Crowbars

## Features:

- Hardened, drop-forged steel construction.
- Heavy-duty tool for stubborn prying tasks and heavy lifting.
- Useful for breaking up hard surfaces.

**Stock Size:** 1-1/4 in

**Tip Width:** 1-1/4 in

**Material:** Heat Treated Carbon Steel

SKU	Wt.	Overall Length
027-1160100	18 lb	60 in

## PUTTY KNIVES &amp; SCRAPERS

## Scrapers &amp; Putty Knives



## Ship Scrapers

## Features:

- Black oxide coating for rust resistance.
- Drop forged for strength.
- Ground and hardened tip.

**Blade Material:** High-Carbon Steel

**Handle Material:** High-Carbon Steel

**Blade Type:** Double-End Bent Ship Scraper



SKU	Blade Width	Overall Length
103-393	1-3/4 in	15 in

## STAPLERS &amp; RIVETERS

## Riveters



## HP-2® Rivet Tools

## Features:

- Square shoulder fulcrum pin of cold-formed heat treated steel prevents pin rotation that can elongate the engaging holes and cause premature tool failure in imitation tools.
- Handles have cushion-molded vinyl grips for comfort.

**Handle Material:** Carbon Steel

**Includes:** (4) Mounted Nosepieces; Service Wrench



SKU	Rivet Size	Body Material
466-M39000	3/32 in; 1/8 in; 5/32 in; 3/16 in	Aluminum Alloy

## Staplers



## T50 Heavy-Duty Staple Guns

## Features:

- Features an all chromed steel housing, jam resistant mechanism, powerful coil spring, staple viewing window, and steel working parts hardened in a 1,500 degree furnace.
- Ideal for general repairs, professional uses, upholstery, insulation, and light trim.

**Body Material:** All Steel

**Finish:** Chrome



SKU	Staple Height
091-T50	1/4 in; 5/16 in; 3/8 in; 1/2 in; 17/32; 9/16 in

## TOOL STORAGE

## Tool Chests



## Site-Vault™ Heavy-Duty Chests

## Features:

- Site-Vault™ security system is a patented system with 3 locking points and a reflective orange lock indicator that shows when the box is locked or unlocked.
- Heavy-duty beveled edge lid eliminates sharp front lid corners and enhances lid strength.
- Integrated sidewall storage locker can be padlocked for personal items.
- Heavy-duty EZ-Loader 4-way skid bolsters allow fork lift loading from any side for quicker and easier transport.
- Upgraded lock system now allows usage of padlock models Master #1, #5, #175 and American #50.

**Width:** 20 in

**Height:** 24 in

**Material:** Steel

**Wt.:** 98 lb



SKU	Capacity Vol.
217-2-652990	8.3 ft³

## WRENCHES

## Adjustable Wrenches



## Adjustable Wrenches

## Features:

- Hardened and tempered.
- Precision machined jaws and knurled adjusting worm.
- Plated to resist rust.

**Head Angle:** 15°

**Head Width:** Varies

**Head Thickness:** Tapered

**Handle Type:** I-Beam

**Material:** Drop-Forged Alloy Steel

**Finish:** Chrome Plated



SKU	Opening Size	Overall Length
103-01-008	1-1/8 in	8 in
103-01-010	1-5/16 in	10 in
103-01-012	1-1/2 in	12 in
103-01-015	1-3/4 in	15 in
103-01-018	2-1/16 in	18 in

## Combination Wrench Sets



## 14 Piece SAE Combination Wrench Sets

## Features:

- Heat treated for maximum strength.
- Sizes stamped on both sides for easy identification.
- Nickel chrome plated for long lasting protection.

No. of Points: 12

Material: Chrome Vanadium Alloy Steel

Finish: Full Polish Chrome Plated

Includes: Roll-Up Pouch; 3/8 in; 7/16 in; 1/2 in; 9/16 in; 5/8 in; 11/16 in; 3/4 in; 13/16 in; 7/8 in; 15/16 in; 1 in; 1-1/16 in; 1-1/8 in; 1-1/4 in

Measuring System: SAE



SKU	Opening Size
192-CCWS4-05	3/8 in; 7/16 in; 1/2 in; 9/16 in; 5/8 in; 11/16 in; 3/4 in; 13/16 in; 7/8 in; 15/16 in; 1 in; 1-1/16 in; 1-1/8 in; 1-1/4 in

## Pipe Wrenches



## Adjustable Pipe Wrenches

## Features:

- Hardened and tempered.
- Malleable handles with heavy duty enamel finish.
- Accurately machined jaws and adjustment nut.

Head Angle: 15°

Material: Malleable Alloy

Jaw Material: Drop Forged Steel

Handle Type: I-Beam



SKU	Pipe Cap.	Overall Length
103-01-318	2-1/2 in	18 in
103-01-324	3 in	24 in



## Aluminum Straight Pipe Wrenches

## Features:

- Nearly 40% lighter than comparable cast-iron models.
- Jaws and all other parts identical to Ridgid heavy duty wrenches.

Jaw Material: Alloy Steel

Handle Type: I-Beam



SKU	Pipe Cap.	Overall Length	Wt.
632-31090	1-1/2 in	10 in	1 lb
632-31095	2 in	14 in	2-1/2 lb
632-31100	2-1/2 in	18 in	3-3/4 lb
632-31105	3 in	24 in	6 lb
632-31110	5 in	36 in	11 lb
632-31115	6 in	48 in	18-1/2 lb



## Heavy-Duty Straight Pipe Wrenches

## Features:

- Instant grip/release.
- Heat-treated replaceable jaw.
- Easy spin nonstick adjustment nut.
- Fully floating forged hook jaw.
- Replaceable hook and heel jaws.

Material: Cast Iron Handle

Jaw Material: Steel

Handle Type: I-Beam



SKU	Pipe Cap.	Overall Length
632-31015	2 in	12 in
632-31020	2 in	14 in
632-31025	2-1/2 in	18 in
632-31030	3 in	24 in

## HVAC Regulators and Flowmeters



## VN Series HVAC Nitrogen-Purging Regulators/Flowmeters

## Features:

- Hybrid design—regulator and flowmeter all in one.
- Easy-to-read nitrogen cylinder content gauge with preset flow rates.
- Heavy-duty brass body designed for rugged field use.
- No adaptors needed.

Gas Type: Nitrogen

Operating Pressure: - 500 psi Test; 3000 psi

Connection Type: CGA-580

Outlet Size: 1/4 in

Outlet Type: Male SAE Flare



SKU	Style
312-VN-500	Preset to Purge/Braze/Test Click Style



## CLEANING PRODUCTS

### Floor & Carpet Cleaners



#### Oil-Based Non-Sanded Floor Sweeping Compounds

##### Features:

- Non-abrasive sweeping compound safe to use on any floor.
- Perfect for collecting dirt and dust on all types of wood, tile, terrazzo, and finished concrete floors without scratching.



SKU	Capacity
103-FLOOR-SWEEP	50 lb

#### Wax-Based Floor Sweeping Compound

##### Features:

- Non-sanded, wax-based formula.
- Conditions as it cleans.
- Suitable for most surfaces, finished or unfinished.
- Keeps floors looking their best.



SKU	Capacity	Packing Type
103-FLOOR-SWEEP-WAX50	50 lb	Box
103-FLOOR-SWEEP-WAX150	150 lb	Drum

### Glass Cleaners



#### Glass Cleaners

##### Features:

- Cleans with Ammonia-D® for a streak-free shine.
- Loosens soil upon contact.
- Won't streak or leave a film.
- Also cleans chrome, stainless steel, Plexiglas® and other hard surfaces.
- Contains no phosphates.

**Chemical Compound:** Ammonia-D

**Capacity Vol.:** 32 oz



SKU
889-322338

## PERSONAL HYGIENE

### Hand Cleaners



#### Natural Orange™ Pumice Hand Cleaners

##### Features:

- Pumice scrubbing particles get hands clean fast.
- Lotion formula provides powerful yet gentle cleaning performance.



SKU
315-0955-04



#### Hand Cleaner Towels

##### Features:

- Clean, citrus-scented formula loosens and dissolves industrial soils while leaving hands free from dryness and irritation.
- Rough Touch® blue towel locks in soil to prevent it from transferring back onto hands and surfaces.
- Hands are left feeling clean with no sticky residue and no rinsing required.



SKU	W x L Per Sheet
253-42272	10 in x 12 in

### Vacuums



#### M18™ Cordless Wet/Dry Vacuums

##### Features:

- 20% higher suction than competition.
- Built in blower port.
- HEPA rated high efficient filter for dust collection.
- On board hose and accessory storage.
- Quieter cordless wet/dry vacuum.
- Resuable and washable filter.
- Tool box design for excellent portability.
- HEPA rated high efficient filter for dust collection.
- Reusable and washable filter.

**Tank Material:** Plastic

**Includes:** 6 ft Flexible Hose; Crevice Tool; HEPA Filter; Utility Nozzle



SKU	Capacity Vol.	Air Consumption
495-0880-20	2 gal	45 ft³/min

## WASTE RECEPTACLES

## Trash Can Liners



## FLEX-O-BAG® Trash Can Liners and Contractor Bags

## Features:

- Convenient large rolls of heavy industrial weight plastic bags in handy dispenser boxes and extra-long twist ties.
- Also included are Hold-Tite rubber bands to secure bag to can top; excluding Heavyweight Contractor Bags (HB42-20).
- No side seams to split and no gussets to weaken the bottom.
- Options available for Extra Heavy-Duty Contractor Bags, Heavyweight Contractor Bags, High Count Industrial Grade Trash Can Liners, and Tall Kitchen Bags.

Thickness: 3 mil

Quantity: 30 Bags per Dispenser



SKU	Capacity Vol.	Height	Width
795-HB55-30	- 55 gal	56 in	36 in

## Trash Cans



## BRUTE® Round Containers without Lid

## Features:

- Durable, heavy-duty containers for a variety of uses.
- Proprietary design plus a UV inhibitor ensures long life.
- Venting channels reduce the force required to remove a full can liner.
- Integrated cinches secure liners for efficient knot-free changes.
- Seamless construction makes cleaning the container easier.
- Contoured base handles improve grip, reduce strain, and improve efficiency.
- Reinforced rims add strength and durability while transporting.
- Built-in, rounded handles allow easy, non-slip lifting and anti-jam nesting.
- Reinforced base built to withstand rough surfaces for extended life.
- Gray, white and yellow are USDA Meat and Poultry Equipment Group Listed and assist in complying with HACCP guidelines.
- Certified to NSF Standard #2 (gray, white and yellow) and Standard #21 (all colors).
- Lids sold separately.

Dia.: 26-1/2 in | Material: Heavy-Duty Plastic



SKU	Capacity Vol.	Height
640-FG265500GRAY	55 gal	33 in

## WIPING PRODUCTS

## Towels &amp; Wipers



## Multi-Purpose Scrubbing Wipes

## Features:

- Dual textured wipe, a textured side and a smooth side.
- Extra large, durable wipes, 10 inch x 12 inch.
- Multi-purpose to use on hands, tools, and surfaces.
- No water needed.
- Contains no harsh chemicals.
- Leaves hands feeling clean and refreshed.

Quantity: 72 Sheets Per Roll



SKU	W x L per sheet
103-360726	10 in x 12 in



## Household Roll Towels

## Features:

- Strong and absorbent 2-ply embossed toweling.
- Made from 100% recycled fiber.
- Green Seal Certified.

Quantity: 85 Sheets per Roll



SKU	W x L per sheet
886-H4000	11.0 in x 9.0 in



## Original™ Multi-Purpose Shop Towels

## Features:

- Ideal for changing oil, refilling fluids and general maintenance.
- Strong, absorbent towel is great for wiping hands, tools and cleaning up grease, oil, grime and fluids.
- Works well when wet.



SKU	W x L per sheet	Quantity
412-75130	11 in x 9.4 in	55 Sheets per Roll
412-75190	9 in x 12 in	200 Sheets per Roll



# Cross-Check™

## Tamper Proof Torque Mark

**#1 TOP SELLER**

**FLUORESCENT**  
UNDER BLACK/UV LIGHT ONLY

**VISUALLY**  
DETECTS LOOSE NUTS AND BOLTS

**PROVIDES**  
WARRANTY PROTECTION

**FULLY CURES**  
IN 24 HOURS

**BOEING SPECIFICATION**  
BMS8-45 TYPE II

DYKEM® Cross-Check™ provides a convenient visual method for identification of vibratory loosening or tampering in nuts, bolts, fasteners, and assemblies. Provides warranty protection against tampering. Marks will be easily broken if parts are tampered with or become loose. Highly visible under ambient light. Excellent adhesion to metal and other substrates.

Dry to touch/handle in 30-40 minutes. 80% curing occurs between 48-72 hours. Completion of curing takes place between 7-10 days Exposing to elevated temp - OR blowing hot air can speed up the drying/curing process.

#### ADDITIONAL FEATURES

- It's like a wax seal for critical holds and fastening
- Safe for most surfaces
- Highly visible
- Excellent adhesion
- Dries to the touch: 1-2 hours
- GHS compliant labeling
- Two year shelf life



#### AVAILABLE PRODUCT

ORS Item #	MFG #	Color	Container	Case Pack	Case Wt.
253-83314	83314	Orange*	1 oz Tube	24	2 lbs.
253-83315	83315	Green*	1 oz Tube	24	2 lbs.
253-83316	83316	Red*	1 oz Tube	24	2 lbs.
253-83317	83317	Yellow*	1 oz Tube	24	2 lbs.
253-83318	83318	Blue*	1 oz Tube	24	2 lbs.
253-83319	83319	White	1 oz Tube	24	2 lbs.
253-83320	83320	Pink	1 oz Tube	24	2 lbs.
253-83321	83321	Gray	1 oz Tube	24	2 lbs.

\*Orange, green, red, yellow and blue fluoresce under black/UV light only





## Stainless Steel Cleaner Towels

### Features:

- Stainless steel cleaner and polish in convenient premoistened towels.
- Clean, polish, brighten and protect in one step without dripping or overspraying.
- Prevent water marks and corrosion while preserving the high luster of stainless steel.
- For use on stainless, steel, chrome and aluminum.

**Quantity:** 30 Sheets per Container



SKU	W x L per sheet
253-91930	9.75 in x 10.5 in

## CRAYONS



## Paintstik® Original B® Solid Paint Markers

### Features:

- Solid paint marker combines the durability of paint in the convenience of a crayon.
- Superior marking performance on oily, icy, wet, dry, or cold surfaces.
- Weather-resistant and UV-resistant for long-lasting marks.
- Works on rough, rusty, or dirty surfaces.

**Length:** 4-3/4 in

**Dia.:** 11/16 in

SKU	Color
434-80220	White
434-80221	Yellow

## MARKERS



## BRITE-MARK® Medium Paint Markers



### Features:

- Make permanent bright marks on metal, rubber, plastic, glass, concrete, leather, stone, wood, vinyl and more.
- Formula is not xylene-based.
- Valve actuated mechanism prevents paint in barrel from drying when cap is left off.
- Heavy duty aluminum body with large paint capacity.
- Ideal for color coding.
- Bullet tips are replaceable to ensure complete use of paint in each marker.
- Drying Time: 25 – 35 seconds.

**Tip Size:** Medium; Fiber #15

**Tip Type:** Bullet

SKU	Color
253-84003	White



## Paint-Riter® Valve Action® Paint Markers

### Features:

- Variety of colors for improved mark identification, quality control, and parts inspection.
- Fast-drying, permanent paint for immediate handling reduces work downtime.
- Xylene-free paint reduces user health risks and makes for a safer marking tool.
- Dura-Nib medium bullet tip resists wear to provide long marking life.
- Durable metal barrel and clip-cap reduce breakage and store easily in pocket.

**Tip Size:** 1/8 in

**Tip Type:** Round Bullet

**Temp Range:** -50° F - 150° F

SKU	Color
434-96820	White
434-96821	Yellow
434-96822	Red
434-96823	Black
434-96825	Blue






## DRIVEN TO OUTPERFORM.™

M18 FUEL™ is engineered for the most demanding tradesmen in the world. Delivering unrivaled performance in a compact structure, all M18 FUEL™ products feature three MILWAUKEE® exclusive innovations — the POWERSTATE™ Brushless Motor, REDLITHIUM™ Battery Pack and REDLINK PLUS™ Intelligence Hardware and Software — that deliver unmatched power, run-time and durability. The M18 FUEL™ 4-1/2" / 5" Dual-Trigger Braking Grinder is the next advancement in angle grinders, providing greater control through dual-trigger activation, a permanent side handle, and AUTOSTOP™ kickback control.

### M18 FUEL

- 
- 1 POWERSTATE™ BRUSHLESS MOTOR**
- MILWAUKEE® Designed and Built Brushless Motor
  - Outperforms All Leading Competitors

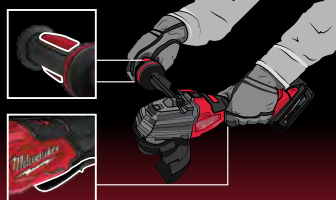
- 
- 2 REDLINK PLUS™ INTELLIGENCE**
- Most Advanced Electronic System on the Market for Maximum Performance
  - Total System Communication with Overload Protection Increases Tool Life

- 
- 3 REDLITHIUM™ BATTERY PACK**  
FITS M18™ TOOLS

Battery and Charger Not Included.

### DUAL-TRIGGER, TWO-HANDED OPERATION

#### MANDATORY FOR OPERATION



### PERMANENT SIDE HANDLE, GREATER CONTROL

#### PROVIDES 15 POSITIONS



### AUTOSTOP™ CONTROL, ADVANCED KICKBACK PROTECTION

#### SENSES KICKBACK AND STOPS ROTATION



## SPECIFICATIONS

DESCRIPTION	SPECIFICATIONS	DESCRIPTION	SPECIFICATIONS
No Load RPM	3,500 – 8,500	Variable Speed	Yes
Wheel Diameter	4-1/2" / 5"	ONE-KEY™	Yes
Switch Type	Dual Paddle, No-Lock	Length (Tool-Only)	14.1"
AUTOSTOP™ Kickback Protection	Yes	Width (Tool-Only)	5.2" (Handle In) 10.3" (Handle Out)
RAPIDSTOP™ Brake	Yes	Height (Tool-Only)	5.4"
E-Clutch	Yes	Weight (Tool-Only)	5 lbs
Overload Protection	Yes		



### M18 FUEL™ 4-1/2" / 5" Dual-Trigger Braking Grinder (Tool-Only) 495-2986-20

Includes: 2986-20 4-1/2" / 5" Enhanced Safety Grinder, T27 Guard, T1 Clip-On Guard, Back Flange, Wrench and Flange Nut.

Battery and Charger Not Included.







## Silver-Streak® Metal Markers with Mechanical Holder

### Features:

- Highly-visible marks illuminate when cutting or welding.
- Superior to soapstone in markability and durability-will not rub, burn, or blow off surface.
- Marks on oily, wet or rusty metals, and will not scratch or abrade surfaces.
- Durable, mechanical holder prevents stick breakage and features a convenient, built-in sharpener, and pocket clip for easy storage.
- Refills (96007) available.

**Tip Size:** 1/8 in

**Tip Type:** Round



SKU
434-96006



## INKZALL™ Ink Markers

### Features:

- Features clog resistant tips and the ability to write through dusty, wet, or oily surfaces.
- Designed for writing on rough surfaces, such as OSB, cinder block, and concrete.
- Built-in hard hat clip for easy storage and access.
- Anti-roll body design plus convenient lanyard hole.
- Fine point, ultra fine point, and chisel tip options available.

SKU	Tip Type
495-48-22-3100	Fine
495-48-22-3102	Medium Point



## Fine Tip Permanent Markers

### Features:

- Permanent alcohol based ink that is fade and water resistant.
- Pocket clip for portability.

**Tip Type:** Bullet

**Quantity:** 36 Markers per Container



SKU
652-35010

## PENCILS



## Silver-Streak® Welders Pencils

### Features:

- Economical, high-strength pencil is ideal for marking all types of metal surfaces — even oily, rusty or wet surfaces.
- Marks resistant to torch flames, will not rub off or burn off like soapstone.
- Highly visible marks illuminate when cutting or welding.
- Durable marks will not scratch or abrade metal surfaces.
- Hexagonal shape reduces barrel roll.
- Pre-sharpened pencils can be easily resharpened with any standard pencil sharpener.
- Highly visible silver color for darker surfaces.

**Length:** 7 in

SKU	Lead Grade
434-96101	#2

## SOAPSTONE HOLDERS



## Standard Soapstone Holders

### Features:

- Pocket clip.
- Positive lock adjustment.
- Spring tension friction guide for soapstone.

**Includes:** Pocket Clip; Soapstone

SKU	Shape	Length
900-RH-30	Round	5 in
900-SH-10	Flat	5 in



## Flat Soapstone Holders

### Features:

- Quality construction for durability and appearance.
- Spring steel pocket clip oversized to fit leather aprons.
- Non-corrosive channel with brass indexing trigger provides superior sliding action.
- Practical design allows for one handed operation and easy use.
- Brass trigger depresses and slides to proper alignment hole and snaps back to lock in position.

**Includes:** Holder only



SKU	Length
326-400-1	5 in

## SOAPSTONES



## Soapstones

## Features:

- All white texture for excellent marking quality.
- Grain cut to ensure good strength and long service life.
- Marks will not contaminate welds and are easily removed.
- Low water content for increased hardness and resistance to breakage.

**Length:** 5 in

SKU	Shape
900-FL-5	Flat
900-RD-5	Round

## CARTS &amp; TRUCKS

## Hand Trucks



## D-Handle Hand Trucks

## Features:

- Holds a maximum capacity of 800 pounds.
- Stands on its own.

**Wheel Width:** 4 in

**Wheel Type:** Pneumatic with Steel Hub; 5/8 in Ball Bearing

**Height:** 50 in

**Width:** 19 in

**Handle Type:** D-Handle

**Material:** Rubber Wheels; Steel; Steel Hub

**Wt.:** 25 lb



SKU	Load Cap.	Wheel Diam
310-30019	800 lb	10 in

## Tilt Carts



## Structural Foam Tilt Trucks

## Features:

- Fits through standard commercial doorways and onto elevators easily.
- Non-marking casters reduce touch-up cleaning.
- Constant force design allows for controlled dumping by one person.
- Easy to clean and virtually maintenance free.
- Unique "steering wheel" handle provides excellent maneuvering capability.
- Lid not Included.

**Height:** 38 in

**Width:** 30.25 in

**Length:** 64.5 in



SKU	Capacity Vol.	Load Cap.
640-FG101300BLA	0.75 yd <sup>3</sup>	1000 lb

## Utility Carts

## Utility Carts

## Features:

- Sturdy structural foam construction won't rust, dent, chip, or peel.
- Rounded corners protect walls and furniture.
- Lightweight and maneuverable.

**Width:** 25-7/8 in

**Depth:** 45-1/4 in



SKU	Load Cap	Height
640-FG452088BLA	500 lb	33-1/4 in

## FLANGE PINS &amp; ALIGNERS



## Two Hole Pins

## Features:

- Sturdy two hole pins are machined from hardened steel for added durability and longevity.
- Utilize fast double lead threads instead of ACME threads for a more reliable hold over time.
- Lightweight.

**Hole Diam:** 1/2 in - 1-7/16 in



SKU	Material	Pin Type
496-42050-T	Alloy Steel	Threaded

## LEVELS



## True Blue® Heavy-Duty Magnetic Torpedo Levels

### Features:

- High contrast e-BAND™ vials highlight the edge of the bubble.
- V-Groove working edge for accurate alignment on pipe or conduit.
- Aluminum frame with top read window.

**No. of Vials:** 3

**Vial Positions:** 45°; Level; Plumb

**Base Type:** Magnetic; V-Groove

**Body Material:** Aluminum



SKU	Length
272-em81.9	9 in

## SQUARES

## True Blue® Combination Squares

### Features:

- True Blue® vial for accuracy.
- Machined square head.
- Self-aligning drawbolt, hardened scriber.
- Etched blade with permanently marked graduations.

**Graduation(s):** 16ths, 32nds

**No. of Scales:** 1

**Increment @ Scale:** 1/16 in @ 1 in

**Material:** Steel

**Finish:** Matte

**Measuring System:** Inch

**Wt.:** 1/2 lb



SKU	Blade Length	Blade Width
272-e250	12 in	1 in

## COVERING PRODUCTS

## Tarps



## Multiple Use Tarps

### Features:

- Sun and fade resistant.
- Rot and rust proof.
- Reinforced hem.
- Heat-sealed seams.
- Grommets every 3 ft.

**Material:** Polyethylene

**Thickness:** 5 mil

**Width:** 20 ft



SKU	Length
101-2020-TARP	20 ft
101-2030	30 ft

## DRAIN CLEANING &amp; INSPECTION EQUIPMENT

## Drain Cleaners

## RIDGID

## K-400 Drum Machine Drain Cleaners

### Features:

- Integrated transport cart allows for easy movement to and from the job site.
- Heavy-duty, over-molded rubber wheels easily navigate over bumps and up stairs.
- Integrated folding handle folds up for easy transport and locks in low position during drain cleaning operation to minimize space requirements.
- Cable control system causes the drum to stop spinning when the blade becomes lodged in a blockage, limits potential for cable to flip over in the drum and helps to indicate to operator when blockages are encountered.
- All K-400 Machines come with RIDGID® Drain Cleaning Gloves and Operator's Manual.

**Drain Size:** 3 in - 4 in

**Voltage:** 115 V



SKU	Speed	Pipe Diam
632-26998	165 RPM Motor Spins Cable	3 in - 4 in
632-27013	165 RPM Motor Spins Cable	3 in - 4 in

# RIDGID

## K-45 Sink Machines

### Features:

- Excellent for small line cleaning.
- Advanced two-way AUTOFEED® control keeps hands and work area clean.
- Lightweight, easy-to-use, no setup required.
- Two-piece twist lock canister with interchangeable inner drum.
- Inner drum prevents water leaks and greatly reduces cable flip-over inside the drum.
- Inner core cables are vinyl-wrapped to prevent core from rusting to spring, provides good flexibility and cleaning power.

**Drain Size:** 3/4 in - 3 in

**Voltage:** 115 V



SKU	Speed	Pipe Diam
632-35473	600 RPM	3/4 in - 3 in

## K-7500 Drain Cleaners

### Features:

- Features performance, cable control, durability and maneuverability demanded by professional users.
- Audible and visual signals for the operator.
- Inner-drum and ball bearing distributor arm work with motor and gearbox system to reduce chance of cable flip-over inside the drum.
- Powerful AUTOFEED® mechanism has grease fittings and an open design for easy maintenance.
- Two position stair climber eases transport and loading to eliminate extra cost for loading wheels.
- Narrow profile lets the machine to fit through bathroom doors.
- Handles adjust to desired height to ensure balanced transport.

**Drain Size:** 3 in - 10 in

**Voltage:** 115 V



SKU	Speed	Pipe Diam
632-60052	200 RPM	3 in - 10 in

## POWER SPIN+ with AUTOFEED® Drain Cleaners

### Features:

- AUTOFEED® Trigger Technology design helps you feed and retrieve the cable without touching it.
- Attached 1/4 inch X 25 ft Bulb Head cable provides good flexibility and cleaning power.
- Dual power operation allows you to rotate cable manually or with a power drill.

**Drain Size:** 1-1/2 in - 1/2 in



SKU	Speed	Pipe Diam
632-57043	500 rpm	1/2 in - 1-1/2 in

## Drain Cleaning & Inspection Equipment Parts & Accessories

# RIDGID

## Drain Cleaner Parts and Accessories

### Features:

- Replacement parts and accessories for drain cleaning systems.
- For use with a variety of systems.



SKU
632-60047R

## COMPRESSORS, BLOW GUNS, HOSES & FITTINGS

### Blow Guns

# GUARDAIR®

## Long John® Safety Air Guns

### Features:

- Safety air guns are ideal for cleaning inaccessible and hard-to-reach areas.
- Use to blow off floor debris, clean masonry forms, tanks, ovens, molds and rafters, as well as machinery and storage areas.

**Operating Pressure:** 150 psi

**Material:** Aluminum Extension

**Noise Level:** 107 dB

**Air Consumption:** 34 cfm

**Output:** 2 lb

**Inlet Size:** 1/4 in (FNPT)



SKU	Extension Length
335-75LJ012AA	12 in
335-75LJ024AA	24 in

## CORDLESS TOOL BATTERIES &amp; CHARGERS

## Batteries, Cordless Tool

**DEWALT****20V MAX\* 5.0AH XR® Starter Kits****Features:**

- 20V MAX\* 5.0Ah XR Battery for longer runtime and improved performance.
- Charges all 12V-20V MAX\* Batteries - 4 amp charge rate charger.
- Kit includes Soft Bag for additional tool storage

**Batt. Type:** Lithium-Ion

SKU	Voltage	Batt. Cap.
115-DCB205-2CK	20 V	5.0 Ah

**20V MAX\* DEWALT POWERSTACK™ 5Ah Batteries****Features:**

- The non-marring over-molded rubber base also helps to protect finished surfaces.
- 2X lifespan provides more overall investment value.
- Quickly check state-of-charge with 3-LED fuel gauge.

**Batt. Type:** Lithium-Ion

SKU	Voltage	Batt. Cap.
115-DCBP520	20V	5 Ah

**FLEXVOLT® 20 V/60 V MAX\* Batteries****Features:**

- FLEXVOLT® 20V/60V Batteries change voltage when you go from 20V MAX\* to 60V MAX\* tools.
- 3-LED Fuel Gauge Charge Indicator.
- When used with 20V MAX\* tools these batteries provide up to 6X the runtime.

**Batt. Type:** Lithium-Ion

SKU	Voltage	Batt. Cap.
115-DCB609	20 V/60 V	9.0 Ah
115-DCB609-2	20 V/60 V	9 Ah
115-DCB615	20 V; 60 V; 120 V	15 Ah

**DEWALT****MAX\* XR® Batteries****Features:**

- Premium XR® Lithium Ion pack provides up to 33% more capacity than standard 20 V MAX\* battery packs.
- 3-LED fuel gauge system allows immediate feedback on state of charge.
- No memory and virtually no self-discharge for maximum productivity and less downtime.

**Batt. Type:** Lithium-Ion**Batt. Cap.:** 5 Ah**Voltage:** 20 V

SKU	For Model
115-DCB205	DCG413B-B3; DCG413P2-AR; DCG413P2-B2; DCG413P2-B2C; DCG413P2-BR
115-DCB205-2	DeWalt® 20-Volt MAX tools

**Milwaukee****M18™ REDLITHIUM™ HIGH OUTPUT™ HD 12.0 Battery Packs****Features:**

- Best-in-class construction: offers long-lasting performance and the best protection against jobsite conditions.
- Fuel gauge Onboard: displays remaining run-time.
- Versatility: powers more than 150 M18™ cordless solutions.

**For Model:** Milwaukee® M18™ Cordless Power Tools

SKU	Voltage	Batt. Cap.
495-48-11-1812	18 V DC	12.0 Ah

**M18™ REDLITHIUM™ HIGH OUTPUT™ XC Battery Packs****Features:**

- REDLINK™ Intelligence provides optimized performance and overload protection using total system communication between tool, battery, and charger.
- Fuel gauge onboard displays remaining runtime for less downtime on the job.
- Offers long-lasting performance and durability.
- Delivers fade-free power in extreme jobsite, weather, and environmental conditions.
- Powers more than 150 Milwaukee M18™ cordless power tools.
- Options available for 6.0 Ah and 8.0 Ah capacities.

**Batt. Type:** Rechargeable Lithium-Ion**For Model:** Milwaukee® M18™ Cordless Power Tools

SKU	Voltage	Batt. Cap.
495-48-11-1862	18 V	6.0 Ah
495-48-11-1880	18 V	8.0 Ah





## M18™ REDLITHIUM™ XC 5.0 Ah Extended Capacity Battery 2-Pack



### Features:

- REDLINK™ Intelligence provides optimized performance and overload protection using total system communication between tool, battery and charger.
- Best-in-class construction; offers long-lasting performance and durability.
- Onboard fuel gauge displays remaining runtime for less downtime on the job.
- Its all-weather performance capability delivers fade-free power in extreme jobsite conditions.

**Batt. Type:** Lithium-Ion

**For Model:** Milwaukee® M18™ Cordless Power Tools

SKU	Voltage	Batt. Cap.
495-48-11-1852	18V	5 A-h

## Battery Chargers



## 20V/60V MAX\* 4 Port Lithium ION Battery Charger



### Features:

- This DEWALT charger is a four-port fast charger that charges 12V MAX, 20V MAX, and 60V MAX batteries at the same time. This fast charger quickly charges a 4.0Ah 20V MAX battery in 40 minutes, and a 6.0Ah 20V MAX battery in 60 minutes. It is also designed to fit the Tool Connect Tag, and is ToughSystem compatible.

**Charging Time:** 1 h

**For Model:** DCB204, DCB606

**Cord Length:** 6.56 ft

**Input Voltage:** 120V

**Housing Material:** Plastic

**Power Source:** Battery Powered

**Wt.:** 8.6 lb

SKU
115-DCB104



## M18™ Dual Bay Simultaneous Rapid Chargers



### Features:

- Capable of charging up to 2 battery packs at the same time at a Rapid Charge speed.
- Internal fan maximizes charger performance.
- Integrated hang holes for wall mounting.
- The charger slowly flashes green when the battery reaches 80% state of charge.
- (2) M18™ Ports.

**For Model:** M18™ Batteries

**Input Voltage:** 120 to 127 AC

**Power Source:** Corded

SKU	Batt. Type
495-48-59-1802	Lithium-Ion

## CUTTING TOOLS

### Band Saws



## Powerband Matrix II HSS Bi-Metal Portable Bandsaw Blades

### Features:

- Cuts harder materials.
- Fits Black & Decker, Greenlee, Milwaukee, Rockwell, Ridgid, Porter-Cable, Skil, and Unitec machine models.
- For general purpose cutting on portable bandsaw machines.
- Ready-to-use.
- Welded length.

**Width:** 1/2 in

**Thickness:** 0.020 in

**Teeth Per Inch:** 18

**Quantity:** 3 Blades per Sleeve

SKU	Cutting Length
681-14602	44-7/8 in



## M18 FUEL™ Compact Band Saw Kits

### Features:

- POWERSTATE™ brushless motor delivers the fastest cutting speed of any compact band saw.
- Largest Capacity in it's Class: Versatility to cut up to 3-1/4 in X 3-1/4 in material in a single pass.
- CPT Constant Power Technology™: maintains cut speed in the toughest applications for optimal performance.
- Jobsite Armor Technology™: proprietary composite material and crush zone barriers provide long lasting rugged protection.

**Cutting Cap.:** 3-1/4 in x 3-1/4 in

**Includes:** (1) Extreme Thick Metal 8/10 TPI Band Saw Blade; (2) M18™ REDLITHIUM HIGH OUTPUT™ CP3.0 Battery; (1) M18™ & M12™ Rapid Charger



SKU	Voltage	Batt. Cap.
495-2829-22	18 V	3.0 Ah

## M18 FUEL™ Deep Cut Band Saws

### Features:

- POWERSTATE™ Brushless Motor for increased cutting speed and power through the toughest applications.
- REDLINK PLUS™ Intelligence provides optimized performance and overload protection using total system communication between tool, battery, and charger.
- CPT™ Constant Power Technology maintains cut speed in the toughest applications for optimal performance.
- Jobsite Armor Technology™ is proprietary composite material and crush zone barriers provide long lasting rugged protection.
- All metal direct drive delivers maximum tool life with all metal direct drive gearing system, while requiring less servicing than a chain drive.
- Tool-Free locking adjustable shoe is a button actuated tool-free design allows user to quickly adjust from an extended shoe to no shoe in seconds.
- LED light illuminates work surface for increased accuracy and productivity.
- Dual-Actuation Trigger provides enhanced control and productivity.
- Versatility to cut up to 5 inch by 5 inch material in one pass and adjustable shoe allows for less tool rotation when cutting material above 5 inches.
- Available as tool only or kits.

**Cutting Cap.:** 5 in x 5 in | **Speed:** 380 SFPM

**Length:** 21 in | **Wt.:** 15 lb

**Batt. Cap.:** 5.0 Ah | **Voltage:** 18 V DC



SKU	Batt. Type	Includes
495-2729-20	Compatible with all M18™ Batteries (Sold Separately)	(1) M18 FUEL™ Deep Cut Band Saw (Tool Only) (2729-20)
495-2729-22	M18™ REDLITHIUM™ XC5.0 Extended Capacity	(1) M18 FUEL™ Deep Cut Band Saw (Tool Only) (2729-20); (2) M18™ REDLITHIUM™ XC5.0 Extended Capacity Battery Pack (48-11-1850); (1) M18™ and M12™ Multi-Voltage Charger (48-59-1812); (1) Carrying Case; (1) Blade



## M18™ Fuel Cordless Band Saws

### Features:

- Compact light weight design for cutting overhead and in tight places.
- Cuts most common materials for electrician, plumber and mechanical cutting applications.
- LED work light illuminates the cut line in dark areas.
- Tool-Free locking adjustable shoe: Button actuated tool-free design allows user to quickly adjust from an extended shoe to no shoe in seconds.

**Cutting Cap.:** 3-1/4 in

**Length:** 17.9 in

**Includes:** Tool Only



SKU
495-2829-20

## Chop & Cut-Off Saws



## Metal-Cutting Saw Blades

### Features:

- Evolution saw blades are designed to deliver maximum performance by using the highest grade carbide, hardened blade bodies, and ultra high-grade brazing techniques.
- All offer premium quality.
- Designed to increase performance.

**Arbor Diam:** 1 in

**No. of Teeth:** 66

**Speed:** 1600 rpm

**Cutting Edge Material:** Carbide

**Applications:** Square Tube; Angle Iron; Mild Steel Plate; Pipe; Tube; Ferrous Metals

**Wt.:** 3.35 lb



SKU	Blade Diam	Thickness
510-14BLADEST	14 in	0.079 in



## Metal-Cutting Chop Saws

### Features:

- Lightweight stamped steel base with integrated bench mounting holes.
- Quick-release vise with robust square-threaded rod for fast and secure clamping.
- Accurate and durable cast steel vice with 0° to 45° miter capacity.
- Compact design with a head lock-down pin and carry handle for easy transportation.
- Chip deflector directs chips away from the operator and reduces cleaning time.
- Ergonomic, ambidextrous trigger with comfortable textured grip.
- Attachable V-shape block included for secure clamping of round and square tube.
- Easy blade change with integrated tool storage.

**Power Cap:** 60 Hz

**Voltage:** 120 V

**Amps:** 15 A

**Speed:** 1,450 RPM



SKU	Blade Diam	Arbor Diam
510-S380CPS	14 in	1 in



## 60V MAX\* Brushless Cordless Cut-Off Saws

### Features:

- Onboard battery box can be latched, sealed, and is large enough to accommodate the DCB615 battery.
- Built-in WIRELESS TOOL CONTROL™ functionality designed to enhance runtime and worksite productivity by allowing it to be linked to other compatible tools and operated cord-free.
- All-metal drivetrain requires no belts to maintain or adjust saw tension.
- Engineered for visibility and accessibility when cutting in tight spaces with a 5-position guard to adjust cut angle.
- Perform horizontal and vertical cuts with a 3-position front handle.
- OSHA Table 1 Compliant for dust management with dual-sided water feed system.
- Tag Ready™ so users and companies can simply attach a DEWALT Tag™ (sold separately) and track its location via the DEWALT Tool Connect™ app.

**Control Type:** 2-Stage Trigger

**Includes:** (1) DCS692 9 in Cut-Off Saw; (2) DCB609 Batteries; (1) Fast Charger; (1) DWAFV8918 Ceramic Metal Cut-Off Wheel; (1) DWAFV8900 Diamond Cutting Wheel



SKU	Blade Diam
115-DCS692X2	9 in

## Circular Saws



## Endurance® Carbide Circular Saw Blades

### Features:

- Endurance blades offer faster cutting and extra long life for contractors.
- Carbide teeth made of C3 grade micro ground carbide keeps the cutting edge sharper for longer periods of time.
- A hardened alloy steel body is used to ensure straight, accurate cuts.
- Specially engineered heat vents and expansion slots prevent blade distortion and increase blade life.
- All of these features add up to a good quality blade that contractors can depend on, time and time again.

**No. of Teeth:** 42

**Teeth Per Inch:** 5.25



SKU	Blade Diam	Arbor Diam
495-48-40-4515	8 in	5/8 in



## FLEXVOLT® Cordless Worm Drive Style Saw Kits

### Features:

- Designed with blade oriented to the left of the motor and the handle positioned at the rear of the saw for easy line of sight.
- Bevel capacity of 53° with stops at 45° and 22.5°.
- TOOL CONNECT™ Tag-Ready product.

**Blade Dia:** 7-1/4 in

**Arbor Dia:** 5/8 in

**Includes:** (1) FLEXVOLT® 60 V MAX\* Saw; (1) DCB118 20V MAX Fan Corded Fast Charger; (1) DCB609 FLEXVOLT® 20 V/60 V MAX 9.0 Ah Battery; (1) FLEXVOLT® Carbide Tipped 7-1/4 in Circular Saw Blade; Blade Wrench; Contractor Bag; User Instruction Manual



SKU	Voltage	Batt. Type
115-DCS577X1	60 V	Lithium-Ion

## Reciprocating Saws



### THE TORCH™ Bi-Metal SAWZALL® Blades

#### Features:

- Metal-cutting blades with the Double Duty Upgrade™ feature a tooth form optimized for maximum durability.
- Tough Neck™ ribs strengthen the blade tang and minimize breakage.
- Grid Iron™ honeycomb pattern increases blade rigidity to resist blade buckling.
- Ideal for making tough, straight cuts.

**Teeth Per Inch:** 14

**Applicable Material:** Scheduled 80 Pipe; Angle Iron

**Cutting Edge Material:** Bi-Metal Tipped

**Material:** Bi-Metal



SKU

495-48-00-8787

### M12 FUEL™ HACKZALL™ Reciprocating Saws

#### Features:

- One-handed design provides superior control & versatility over a standard recip saw.
- Compact size allows for cutting in tight spaces, and light weight makes overhead work easier.
- POWERSTATE™ Brushless Motor supplies constant power for faster cuts and reduced heat for extended life.
- REDLINK PLUS™ Intelligence provides optimized performance and overload protection using total system communication between tool, battery and charger.
- REDLITHIUM™ XC 4.0 Battery Pack (not included) provides superior pack construction, more work per charge and more work over the life of the pack than competitive batteries.

**Batt. Type:** Lithium Ion

**Stroke Length:** 7/8 in

**Length:** 14 in

**Handle Type:** Soft Grip



SKU

495-2719-20

Voltage

18 V



### M18 FUEL™ SAWZALL® Cordless Reciprocating Saws

#### Features:

- POWERSTATE™ Brushless Motor for increased cutting speed and power through the toughest applications.
- REDLINK™ Plus Intelligence provides optimized performance and overload protection using total system communication between tool, battery, and charger.
- Anti-corrosion blade clamp delivers prolonged blade clamp durability with less downtime due to corrosion.
- Metal reinforced battery connection provides improved durability and battery retention over life.
- Lever action QUIK-LOK™ blade clamp provides fast and easy blade changes.
- Built-in LED light illuminates the work surface while cutting.
- Adjustable shoe extends the life of the blade.
- 1-1/4 inch stroke length removes more material with each stroke.
- Hang hook allows for convenient storage on the job.
- Compatible with all M18™ batteries and M18™ chargers.
- Options available for bare tool only and kits with battery packs.

**Batt. Type:** All Rechargeable M18™ Batteries

**Stroke Length:** 1-1/4 in

**Cycle Rate:** 3,000 SPM

**Length:** 17.1 in

**Control Type:** Trigger

**Handle Type:** D-Handle

**Includes:** (1) M18 FUEL™ SAWZALL® Reciprocating Saw (Tool Only) (2821-20); (2) M18™ REDLITHIUM™ XC5.0 Extended Capacity Battery Packs (48-11-1850); (1) M18™ and M12™ Multi-Voltage Charger (48-59-1812)



SKU

495-2821-22

Voltage

18 V DC

Batt. Cap.

5.0 Ah





## M18 FUEL™ SAWZALL® Reciprocating Saw-Tool Only

### Features:

- Select a saw for superior performance - it delivers the fastest cutting speed in its class.
- Provides increased power with the durability of a corded saw.
- POWERSTATE™ Brushless Motor supplies constant power for faster cuts and reduced heat for extended life.
- REDLINK PLUS™ provides optimized performance and overload protection using total system communication between tool, battery and charger.

**Batt. Type:** REDLITHIUM™ XC5.0

**Stroke Length:** 1-1/4 in

**Cycle Rate:** 0-3,000 SPM

**Length:** 17.1 in

**Control Type:** Variable Speed

**Handle Type:** D-Handle

**Includes:** Bare Tool Only

**Wt.:** 6.8 lb



SKU	Voltage
495-2821-20	18 V

## M18™ Sawzall® Cordless Reciprocating Saw Kits

### Features:

- Counter balance mechanism reduces vibration for more control and less fatigue.
- Lever action QUIK-LOK™ blade clamp provides fast and easy blade changes.
- All metal gearing and gear case provide maximum durability.
- REDLINK™ Intelligence provide ultimate performance and protection against jobsite conditions.

**Batt. Type:** M18

**Stroke Length:** 1-1/4 in

**Length:** 17.1 in

**Includes:** M18 FUEL™ SAWZALL® Reciprocating Saw; M18™ Redlithium™ XC5.0 Extended Capacity Battery Pack; M18™ and M12™ Multi-Voltage Charger



SKU	Voltage	Batt. Cap.
495-2821-21	18 V	5.0 Ah

## DRILLING & FASTENING TOOLS

### Crimpers



## M18™ FORCE LOGIC™ Cordless Press Tools

### Features:

- One-handed use in-line design.
- Delivers press accuracy and reliability.
- M18™ Force Logic™ Press Tool monitors the force output to ensure quality connections.
- Compatible with all M18 batteries and chargers.

**Height:** 4.5 in

**Length:** 14.17 in

**Width:** 3.14 in



SKU	Voltage	Batt. Type
495-2922-22	18V	Lithium Ion

### Drills



## Unibit® High Speed Steel Fractional Self-Starting

### Features:

- Single-flute cutting edge for greater control through steps.
- Hex shank prevents slipping in drill chuck.
- Also available with (TiN) coating for longer life.
- New SpeedPoint tip penetrates faster than previous Unibits and prevents walking.
- Ideal for drilling holes into thin materials such as stainless steel, copper, brass, aluminum, plastic and laminates.

**No. of Steps:** 10



SKU	Cutting Diam.	Material Thickness
585-10235	1/4 in - 1-3/8 in	1/8 in



## 29-pc Cobalt M-35 Metal Index Drill Bit Sets

### Features:

- Constructed of M-35 5 percent cobalt high speed steel for super abrasive resistance in tough metals.
- Cobalt steel extends cutting edge life and maintains cutting life after resharping.
- Extra hard drill for greater wear.
- 135° split point tip starts on contact, cuts with less force.
- Removable cartridges: easy to carry bits from case to worksite.
- Rubber overmolded case protects kit if dropped.
- Tap & Drill selection chart for convenient reference.
- Automatic indexing for easy bit access and identification.

**Finish:** Black Oxide

**Includes:** 29-piece set in metal index case includes drill bit sizes 1/16 in to 1/2 in in 1/64 in increments

**Point Angle:** 135°

**Quantity:** 29 Pieces per Set

**Wt.:** 4.4 lb



SKU	Cutting Diam	Cutting Edge Material
585-3018002	1/16 in - 1/2 in	HSS

## Impact Drivers



## 20V MAX\* XR® 3-Speed Impact 1/4 in Drivers

### Features:

- Brushless motor delivers 1825 in-lb of torque and 3400 RPM to drive large diameter screws.
- Complete tough fastening applications on the jobsite.
- Pro-level control and precision with variable speed trigger and 3-speed setting.
- Brighten work areas with an integrated 3-LED work light for enhanced visibility in low-light areas.
- Available as bare tool only and as kits.

**Drive Size:** 1/4 in

**Cycle Rate:** 4200 IPM

**Torque:** 1825 in-lb

**Length:** 5-1/10 in

**Voltage:** 20.0 V



SKU	Includes
115-DCF845B	(1) DCF845 20V MAX* XR® 1/4 in 3-Speed Impact Driver; (1) Belt Hook
115-DCF845P2	(1) DCF845 20V MAX* XR® 1/4 in 3-Speed Impact Driver; (2) DCB205 20V MAX* 5.0 Ah Batteries; (1) Belt Hook; (1) Charger; (1) Kit Bag



## M18 FUEL™ 1/4 in Hex Impact Drivers

### Features:

- POWERSTATE™ Brushless Motor delivers faster driving speed, increasing users productivity.
- 4-Mode DRIVE CONTROL™ provides greater control over output speed and power.
- M18™ REDLITHIUM™ Battery Pack delivers more work per charge.
- Single handed bit insertion for faster, easier changing of bits.
- Self-Tapping Screw mode provides faster installation time by reducing the stripping of fasteners.
- Premium rubber overmold withstands corrosive materials and provides increased comfort when in use.
- LED light to illuminate the work area.
- Compatible with all M18™ batteries.
- Available as tool only or kit.

**Control Type:** Trigger

**Voltage:** 18 V

**Speed:** 3900 RPM



SKU	Batt. Type	Length	Includes
495-2953-22	Lithium-Ion	4.49 in	(1) M18 FUEL™ 1/4 in Hex Impact Driver Kit(2953-22); (2) M18™ REDLITHIUM™ XC5.0 Extended Capacity Battery Pack(48-11-1850); (1) M18™ and M12™ Multi-Voltage Charger(48-59-1812); (1) Blow Molding Carrying Case; (1) Belt Clip
495-2953-20	18 V	3.9 in	1/4 in Hex Impact Driver; Belt Clip

## Wrenches



## 20V MAX\* XR® High Torque Cordless Impact Wrenches

### Features:

- PRECISION WRENCH™ mode is included to help prevent overtightening in forward, and run-off in reverse, for additional user control.
- 4-mode push button switch to easily transitions speeds and adjust LED brightness when needed.
- Bare tool and kits available.

**Voltage:** 20 V

**Batt. Type:** Lithium-Ion

**Speed:** 2200 RPM | **Torque:** 1400 ft-lb

**Includes:** (1) DCF900 Impact Wrench; (2) DCB205 20V MAX\* 5.0 Ah Batteries; (1) DCB1104-BR Charger; (1) Kit Bag



SKU	Drive Size
115-DCF900P2	1/2 in



## M18 FUEL™ High Torque 1/2 in Impact Wrenches with Friction Ring

### Features:

- REDLINK PLUS™ intelligence prevents damage to the tool and battery due to overloading or overheating.
- Bolt removal mode provides maximum nut-busting torque to break fastener free, then slows to 750 RPM for more control when removing fasteners.
- Premium rubber over-mold withstands corrosive materials and provides increased comfort when in use.
- Features a friction ring design to ensure quick and easy socket changes.
- REDLITHIUM™ batteries deliver more work per charge and more work over the life of the battery.
- LED light to illuminate the work area.
- Available as tool only or kit.

**Voltage:** 18 V DC | **Batt. Type:** Lithium-Ion

**Speed:** 2000 RPM | **Cycle Rate:** 2400 IPM

**Torque:** 1600 ft-lb

**Includes:** (1) M18 FUEL™ 1/2 in High Torque Impact Wrench with Friction Ring (Tool Only) (2967-20)



SKU	Drive Size	Drive Type
495-2967-20	1/2 in	Square

## M18 FUEL™ w/ONE-KEY™ High Torque Impact Wrenches 3/4 in Friction Ring

### Features:

- ONE-KEY™ compatible to customize, track and manage tool's performance and location.
- POWERSTATE™ brushless motor delivers up to 1200 ft-lb of fastening torque and 1500 ft-lb of nut-busting torque.
- Features a friction ring with thru-hole design to ensure quick and easy socket changes.
- Easily toggle up to four custom performance profiles that can be saved to the memory of the tool.
- Premium rubber over-mold withstands corrosive materials and provides increased comfort when in use.
- LED light to illuminate the work area.
- Available as tool only or kit.

**Voltage:** 18 V DC | **Batt. Type:** Lithium Ion

**Speed:** 1800 RPM | **Torque:** 1600 ft-lb

**Includes:** (1) M18 FUEL™ w/ONE-KEY™ High Torque Impact Wrench 3/4 in Friction Ring Bare Tool (2864-20); (2) M18™ REDLITHIUM™ XC5.0 Resistant Capacity Battery Pack (48-11-1850R); (1) M18™ and M12™ Multi-Voltage Charger (48-59-1812)



SKU	Drive Size	Drive Type
495-2864-22R	3/4 in	Square



## M18™ Impact Wrench Kits with Friction Rings

### Features:

- Powerful and compact impact wrench in its class offers one of the best power to size ratio.
- Featuring a Milwaukee® built four-pole frameless motor and optimized impact mechanism.
- This impact driver delivers up to 2,450 RPM, 3,350 IPM and 167 ft-lb of fastening torque for excellent performance.
- REDLINK™ intelligence provides optimized performance and overload protection using total system communication between tool, battery and charger.
- The impact wrench features a friction ring anvil.

**Batt. Type:** 18 V

**Speed:** 2000 RPM

**Cycle Rate:** 2400 IPM

**Torque:** 1100 ft-lb

**Includes:** (1) M18 FUEL™ 1/2 in High Torque Impact Wrench w/Friction Ring (2967-20); (2) M18™ REDLITHIUM™ XC5.0 Resistant Battery (48-11-1850R); (1) M18™ and M12™ Multi-Voltage Charger (48-59-1812); (1) Hard Case



SKU	Drive Size
495-2967-22	1/2 in

## FINISHING TOOLS

### Grinders

**DEWALT**

## 4.7 hp Large Angle Grinders

### Features:

- Motor provides overload protection.
- Dust Ejection System™.
- Anti-Vibe trigger handle.
- Lightweight design.
- Automatic turn-off brushes.

**Watts:** 3,450 W

**Speed:** 6,500 RPM

**Control Type:** Trigger; No Lock-On

**Spindle Thread:** 5/8 in to 11

**Includes:** 9 in Guard; 3-Position Side Handle



SKU	Wheel Dia	Amps
115-DWE4559N	9 in	15 A

**DEWALT**

## High Performance Angle Grinders with E-Clutch®



### Features:

- E-Clutch® Activates in less than a tenth of a second when a pinch/stall event is detected.
- Dust Ejection System™ provides durability by ejecting damaging dust and debris particles that enter the tool through the air intake vents.
- Power Loss Reset® prevents accidental restarts following a power disruption when the tool is left in the "on" position.
- Power tool shuts off before overheating with Power-Off® Advanced Overload Protection.

**Watts:** 1,700 MWO | **Speed:** 9,000 RPM

**Control Type:** Paddle; No Lock-On

**Spindle Thread:** 5/8 in to 11 in

**Includes:** Grinder; Side Handle; Inner and Outer Flange; 6 in Type 27 Guard; 6 in Type 1 Guard

SKU	Wheel Dia	Amps
115-DWE43144N	6 in	13 A

## Small Angle Grinders

### Features:

- 11 Amp AC/DC 11,000 RPM motor designed for faster material removal and higher overload protection.
- Low profile gear case allows tool to fit into tight spaces.
- Quick-Change™ Wheel Release provides easier and quicker wheel removal without the need for a wrench.



**Watts:** 1400 W | **Speed:** 11000 RPM

**Spindle Thread:** 5/8 in - 11

SKU	Wheel Dia	Amps	Control Type	Includes
115-DWE402	4-1/2 in	11 A	Paddle Switch with Lock-Off	2-Position Side Handle; 4-1/2 in One-Touch™ Type 27 Guard
115-DWE402N	4-1/2 in	11 A	Paddle Switch with No Lock-On	One-Touch™ Guard; 2-Position Side Handle; Wrench

## 20V MAX\* FLEXVOLT™ ADVANTAGE™ Technology Variable Speed Grinders



### Features:

- Variable speed functionality allows the user to adjust wheel speed for applications as needed.
- E-CLUTCH® actives in less than a tenth of a second when a pinch/stall is detected, shutting down the motor.
- Brake engages when trigger is released stopping the wheel quickly.

**Speed:** 9000 RPM

**Length:** 12-1/4 in

SKU	Voltage
115-DCG416B	20V

**DEWALT**

## FLEXVOLT® 60V MAX\* Cordless Grinders with Kickback Brake



### Features:

- 13 Amp motor equivalent power.
- No-load speed of 9,000 RPM for applications with 6 inch grinder wheels.
- Kickback brake engages when a pinch, stall, or bind-up event is sensed, it engages with maximum force to quickly stop the wheel, reduce the movement of the grinder, and shut the grinder off.
- Anti-rotation E-CLUTCH® activates in less than a tenth of a second when a pinch/stall is detected, shutting down the motor.
- Options available for bare tool only or kits with battery.

**Batt. Type:** Lithium Ion | **Speed:** 9,000 RPM

**Includes:** (1) DCG418; (2) 20V/60V MAX\* FLEXVOLT® 9.0 Ah Batteries (DCB609); (1) Charger; (1) Side Handle; (1) 4-1/2 in Type 27 Guard; (1) 6 in Type 27 Guard; (1) Wrench; (2) Flanges; (1) Kit Bag

SKU	Voltage	Spindle Thread
115-DCG418X2	60 V DC	5/8 in-11

**MILWAUKEE**

## M18 FUEL™ 4-1/2 in and 5 in Cordless Angle Grinders



### Features:

- POWERSTATE™ brushless motor, purposely built for the M18 FUEL™ 4-1/2 in and 5 in angle grinder, delivers 8,500 RPM to provide the power to complete the toughest grinding and cutting applications.
- REDLINK PLUS™ Intelligence enables communication between batteries and tools, allowing for unmatched levels of performance, protection, and compatibility.
- Tool-free accessory changes with Integrated FIXTEC Nut Technology.
- Electronic clutch for kickback protection.
- Anti-vibration side handle for increased user comfort and safety.
- Overload protection to maximize motor life.
- Compatible with all M18™ batteries.
- Options available for bare tool only or kit with 2 M18™ REDLITHIUM™ HIGH OUTPUT™ XC6.0 battery packs.

**Voltage:** 18 V DC

**Spindle Thread:** 5/8 in-11

SKU	Control Type	Handle Type	Includes
495-2880-20	Paddle Switch; No-Lock	Back Body Grip; Anti-Vibration Side Handle	(1) M18 FUEL™ 4-1/2 in/5 in Grinder Paddle Switch, No-Lock (2880-20); (1) Back Flange; (1) Flange Nut; (1) Side Handle; (1) Type 27 Guard; (1) Type 1 Clip-On Guard; (1) Wrench
495-2880-22	Paddle	Straight	(1) M18 FUEL™ 4-1/2 in/5 in Grinder Paddle Switch, No-Lock; (2) M18 REDLITHIUM™ HIGH OUTPUT™ XC6.0 Battery Pack; (1) M18™ & M12™ Rapid Charger; (1) T27 Guard; (1) T1 Clip-On Guard; (1) Side Handle; (1) Wrench; (1) Back Flange; (1) Flange Nut; (1) Contractor Bag





## 1-1/2 in Die Grinders



### Features:

- Motor provides high power and speed for all 1-1/2 in grinding applications.
- AC/DC capacity works off welding machines and generators for increased productivity and versatility.
- Precision 1/4 in collet securely holds all proper accessories (1/8 in reducing sleeve as optional accessory).

**Watts:** 350 W

**Amps:** 4.2 A

**Speed:** 25,000 RPM

**Includes:** (2) Wrenches; Collet

SKU	Collet Size	Wheel Diam	Control Type
115-DWE4887N	1/4 in	1-1/2 in	Paddle; No-Locking
115-DWE4887	1/4 in	1-1/2 in	Paddle Switch with Lock-On Button

## HAMMER DRILLING & DEMOLITION TOOLS

### Combination Hammers

## SDS Max Combination Hammer Kits



### Features:

- 6.1J of impact energy provides the power to drill fast in the hardest of concrete.
- Active Vibration Control™ reduces vibration felt by the user at the handles.
- The lightweight design makes it ideally suited for horizontal serial drilling for #4 - #8 rebar, coring and chipping in any mid to upper wall and ceiling application.

**Speed:** - 540 RPM

**Cycle Rate:** - 3150 BPM

**Impact:** 4.5 ft-lb

**Includes:** 9.8 ft Cord; Case; Second Handle

SKU	Drive Type	Amps
115-D25481K	SDS Max	10.5 A

## Rotary Hammers



## XR® Brushless SDS Plus Rotary Hammers



### Features:

- Brushless motor for extended runtime and durability.
- Retractable utility hook for convenient hanging.
- Excellent power-to-weight ratio, results in superior productivity.
- Available as tool only or as a kit.

**Batt. Type:** Lithium-Ion

**Drive Size:** 1 in

**Drive Type:** SDS Plus

**Speed:** - 1100 RPM

**Cycle Rate:** - 4600 BPM

**Impact:** 1.5 ft-lb | **Length:** 13 in | **Voltage:** 20 V

SKU	Batt. Cap.	Includes
115-DCH273P2	5.0 Ah	DCH273 Rotary Hammer; (2) DCB205 5.0 Ah Batteries; 360 Degree Side Handle; DCB101 Charger; Depth Rod; Retractable Utility Hook; Case
115-DCH273B	5.0 Ah	DCH273 Rotary Hammer (Tool Only)



## M18 FUEL™ SDS Plus Cordless Rotary Hammers



### Features:

- POWERSTATE™ brushless motor.
- AUTOSTOP Kickback Control enhances safety by electronically sensing a tool bind-up and shutting the tool off.
- Anti-Vibration System (AVS) minimizes vibration for maximum comfort.
- REDLINK PLUS™ Intelligence integrates full-circle communication between tool, battery and charger to protect from overloading, overheating, and over-discharging.
- Rotary Hammer, Hammer only, Rotary only modes.
- Bare tool and kits available.

**Batt. Type:** Lithium-Ion | **Drive Size:** 1 in

**Speed:** - 1330 RPM | **Cycle Rate:** - 1330 BPM

**Impact:** 2 ft-lb | **Length:** 11.5 in | **Batt. Cap.:** 5.0 Ah

**Voltage:** 18 V

SKU	Includes
495-2912-20	(1) M18 FUEL™ 1 in SDS Plus Rotary Hammer (2912-20)
495-2912-22DE	(1) M18 FUEL™ 1 in SDS Plus Rotary Hammer (2912-20); (2) M18™ REDLITHIUM™ HIGH OUTPUT™ XC 6.0 Battery Pack (48-11-1865); (1) M18™ and M12™ Rapid Charger (48-59-1808); (1) M18 FUEL™ HAMMERVAC™ 1 in Dedicated Dust Extractor (2912-DE)
495-2912-22	(1) M18 FUEL™ 1 in SDS Plus Rotary Hammer (2912-20); (2) M18™ REDLITHIUM™ HIGH OUTPUT™ XC 6.0 Battery Pack (48-11-1865); (1) M18™ and M12™ Rapid Charger (48-59-1808)

## HEATING TOOLS

## Heat Guns &amp; Torches



## Master Heat Guns®

## Features:

- Professional quality, heavy-duty, multiple use heat gun.
- Sturdy die cast housing and powerful high-speed universal motor.
- Adjustable non-slip stand.
- Use to bend plastics, cure adhesives, dry parts, heat parts, shrink tubing and packaging, strip paint and more.
- Three position OFF-COLD-HOT rocker switch.
- Optional momentary contact switch.
- Available as a tool or a kit.

**Velocity:** 3,400 ft/min

**Frequency:** 60 Hz

**Amps:** 14.5 A

**Watts:** 1,740 W

**Outlet Size:** 1-1/2 in OD

**Cord Length:** 6 ft; 3-Wire Grounded

**Control Type:** Rocker Switch - Hot/Cool/Off

**Wt.:** 3.7 lb



SKU	Operating Temp.	Flow
467-HG-501D	1,200° F	27 ft³/min

## MULTI-PURPOSE POWER TOOLS

## Combo Kits Cordless



## 20V MAX\* Lithium Ion Grinder Tool Kits

## Features:

- Provides high-power for cutting and grinding applications.
- Quick-Change™ Wheel Release allows for tool-free wheel changes without the need for a wrench.
- Tool-free guard allows for quick and easy guard adjustments/positioning.
- 2-finger trigger switch (w/ lock-off button) allows for convenient activation and easier gripping.
- 2-position side handle offers greater control, comfort and versatility.

**Batt. Cap.:** 5 Ah

**Speed:** 7,000 RPM

**Includes:** DCG412 Grinder; (2) DCB205 20V MAX\* XR Premium Li-Ion Battery; Fast Charger; Spanner Wrench; 5 inch Type 27 Grinding Guard; 2-Position Side Handle; Contractor Bag



SKU	Voltage	Batt. Type
115-DCG412P2	20 V	Lithium-Ion



## FLEXVOLT® Cordless Hammerdrill &amp; Impact Driver Combo Kits

## Features:

- The 1/2 in hammerdrill 3-speed, high performance, all-metal transmission optimizes tool-to-task for fast application speeds and improved run-time, including 0-38250 BPM for fast drilling in masonry materials, and the 3-mode LED is up to 20X brighter than previous model.
- The 1/4 in impact driver provides max torque at fast RPM speed and IPM.
- Both are compact in size and lightweight to fit in tight areas.

**Torque:** 1824 in-lb

**Includes:** DCD999B 20V MAX\* 1/2 in Brushless Cordless Hammer Drill/Driver With FLEXVOLT® Advantage™; DCF887 20V MAX\* 1/4 in XR® Brushless Cordless Impact Driver; DCB205 20V MAX\* Lithium Ion 5.0 Ah battery; DCB118 8 Amp Fast Charger; (2) Belt Hooks; Kit Bag



SKU	Voltage
115-DCK2100P2	20V



## M18 FUEL™ 2-Tool Combo Kits

## Features:

- Includes Milwaukee® cordless hammer drill/driver and cordless impact driver.
- Each tool features dynamic Powerstate™ brushless motor.
- 4-mode Drive Control™ provides greater control over output speed and power.
- Includes durable carrying case.

**Batt. Cap.:** 5 Ah

**Speed:** 2100/3900 RPM

**Includes:** (1) M18 FUEL™ 1/2 in Hammer Drill/Driver; (1) M18 FUEL™ 1/4 in Hex Impact Driver; (2) M18™ REDLITHIUM™ XC5.0 Extended Capacity Battery Pack; (1) M18™ & M12™ Multi-Voltage Charger; (1) Side Handle; (2) Belt Clip; (1) Blow Molding Carrying Case



SKU	Voltage	Batt. Type
495-3697-22	18 V	Lithium-Ion



## M18™ 1/2 in Brushless Hammer Drill/Driver Kits

### Features:

- Compact design provides excellent balance and control, ideal for overhead applications or work in tight spaces.
- Milwaukee brushless motor optimized for efficiency, this motor delivers more run-time and longer life than a brushed motor.
- All-metal gear case and 1/2 inch metal chuck, provide maximum durability.

**Batt. Cap.:** 3.0 Ah

**Torque:** 725 in-lb

**Speed:** 1800 RPM

**Includes:** (1) M18™ 1/2 in Brushless Hammer Drill (Tool Only) (2902-20); (2) M18™ REDLITHIUM™ XC 4.0 Extended Capacity Battery Pack(48-11-1840); (1) M18™ and M12™ Multi-Voltage Charger(48-59-1812); (1) Carrying Case (1) Side Handle; (1) Belt Clip



SKU	Voltage	Batt. Type
495-2904-22	18 V	Lithium-Ion

## M18™ Cordless Combo Kits

### Features:

- Delivers maximum power and application speed for greater efficiency on the job.
- Superior control and versatility.

**Batt. Cap.:** 1.5 Ah

**Torque:** Drill 500 in-lb; Impact Driver 1,500 in-lb

**Speed:** 400 RPM; 1,800 RPM

**Includes:** (1) M18™ Compact 1/2" Drill Driver (2606-20); (1) M18™ 1/4" Hex Impact Driver (2656-20); (2) M18™ Compact REDLITHIUM™ CP1.5 Ah Battery Packs (48-11-1815); (1) M18™ and M12™ Multi-Voltage Charger (48-59-1812); (1) Belt Clip; (1) Contractor Bag



SKU	Voltage	Batt. Type
495-2691-22	18 V DC	M18™ REDLITHIUM™ Compact

## CLOTHING PROTECTION

### Coveralls & Overalls



## Tyvek® 400 Coveralls

### Features:

- Composed of Tyvek® 400 flash-spun, high-density polyethylene which creates a unique, nonwoven material.
- Offers inherent barrier against particles down to 1.0 micron in size.
- Protection built into the fabric itself, no films or laminates to abrade or wear away.
- Comfort fit design enables a greater range of movement while stretching and bending with reinforcement in high stress areas.
- Available in many different styles.



SKU	Size Group	Style
251-TY120S-L	Large	Serged Seams; Collar; Elastic Waist; Zipper Front; Open Wrists and Ankles; Storm Flap
251-TY120S-XL	X-Large	Serged Seams; Collar; Elastic Waist; Zipper Front; Open Wrists and Ankles; Storm Flap
251-TY120S-2XL	2X-Large	Serged Seams; Collar; Elastic Waist; Zipper Front; Open Wrists and Ankles; Storm Flap
251-TY120S-3XL	3X-Large	Serged Seams; Collar; Elastic Waist; Zipper Front; Open Wrists and Ankles; Storm Flap
251-TY122S-XL	X-Large	Serged Seams; Attached Hood (Respirator Fit); Attached Skid-Resistant Boot; Elastic Waist, Wrists, Ankles; Front Zipper; Storm Flap
251-TY122S-2XL	2X-Large	Serged Seams; Attached Hood (Respirator Fit); Attached Skid-Resistant Boot; Elastic Waist, Wrists, Ankles; Front Zipper; Storm Flap
251-TY127S-XL	X-Large	Serged Seams; Attached Hood (Respirator Fit); Elastic Waist, Wrists, Ankles; Front Zipper; Storm Flap
251-TY127S-2XL	2X-Large	Serged Seams; Attached Hood (Respirator Fit); Elastic Waist, Wrists, Ankles; Front Zipper; Storm Flap

### Rainwear



## 3-Pc Rainsuits

### Features:

- Jacket is vented back for breathability, duo-layer front closer to prevent wet, two front patch pockets for storage, and a corduroy collar for comfort.
- Removable hood with drawstring.
- Adjustable suspenders for overalls with triangular buckles for perfect fit and single snap fly.

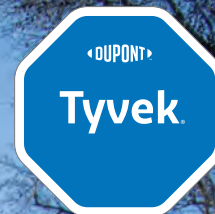
**Material:** PVC Over Polyester



SKU	Size Group
101-9000-M	Medium
101-9000-L	Large
101-9000-XL	X-Large
101-9000-2XL	2X-Large
101-9000-3XL	3X-Large
101-9000-4XL	4X-Large



# An ideal balance of protection, durability and comfort



DuPont™ Tyvek® 400 garments are composed of a comfortable and durable nonwoven material that offers an inherent barrier against particles down to 1.0 micron in size, aerosols and light liquid splash. Protection is built into the fabric itself; there are no films or laminates to abrade or wear away. The breathable material will help keep workers comfortable without compromising safety.



**DuPont Personal Protection**



Contact us today for more information.

© 2024 DuPont. All rights reserved. DuPont™, the DuPont Oval Logo, and all trademarks and service marks denoted with ™, SM or ® are owned by affiliates of DuPont de Nemours, Inc. unless otherwise noted.



## EAR PROTECTION

### Earplug Parts & Accessories



#### PlugStation® Earplug Dispensers

##### Features:

- Compliance — High visibility to increase awareness for your hearing conservation program.
- Convenience — Hang a PlugStation® anywhere plugs are needed.
- Workers take one pair at a time so there are no wasteful grabbing of multiple pairs.
- When PlugStation® is empty, simply dispose of it and hang a new one.
- Uncorded earplugs are available in two sizes - 250 pairs and 500 pairs.
- Available for CAMO PLUGS® Uncorded, Glide® Packaged Corded, Goin'Green® Uncorded, Mellows® Uncorded, Meteors® Small/Uncorded, Pura-Fit® Corded/Uncorded/Packaged Corded, SparkPlug® Corded/Uncorded/Packaged, and SparkPlug® Metal Detectable/Corded/Packaged styles.
- Can also be used with EcoStation™/PlugStation® Magnetic Bracket Assembly (6868 sold separately).

**Includes:** Dispensers with Uncorded Earplugs; Mounting Brackets

**Quantity:** (4) Dispensers; (4) Mounting Brackets; 500 Pairs/Dispenser



SKU	Used With
507-6645	SparkPlugs® Earplugs; Uncorded

### Earplugs



#### 3M™ E-A-R™ Classic™ Earplugs 310-1001

##### Features:

- Flame-retardant.
- Moisture resistant.
- Shape prevents shifting and keeps effectiveness of noise seal constant.
- Slow recovery PVC foam provides comfort with low pressure.



SKU	Noise Reduction	Body Material
247-310-1001	29 dB	Polymer Foam



#### 3M™ E-A-R™ Push-Ins™ Earplugs 318-1001

##### Features:

- No roll down earplugs.
- The patented E-A-R™ form foam tip is shaped and sized to mold comfortably to fit virtually every sized canal.
- The the unique foam actually softens and becomes more pliable with body temperature, the seal and comfort increases the longer the plugs are worn.



SKU	Noise Reduction	Body Material
247-318-1001	28 dB	Polyurethane

#### 3M™ E-A-R™ UltraFit™ Earplugs 340-4004

##### Features:

- Conforms to oval shape of ear.
- No rolling or touching plug portion during insertion.
- Proprietary, premolded, triple-flange earplug design inserts easily and provides a comfortable fit for a reusable earplug.



SKU	Noise Reduction	Body Material
247-340-4004	25 dB	Elastomeric Polymer

#### 3M™ Foam Earplugs 1100

##### Features:

- Smooth, dirt resistant surface for hygiene.
- Tapered shape to fit the ear canal comfortably.
- Hypo-allergenic material.
- Comfortable for a wide range of ear sizes.



SKU	Noise Reduction	Body Material
142-1100	29 dB	Foam

## Laser Lite® Disposable Earplugs

### Features:

- Vibrant colors make protection visible.
- Self-adjusting polyurethane foam expands to fit virtually every wearer.
- Contoured T-shape for easy insertion and wear.
- Smooth, soil-resistant closed cell-foam skin prevents dirt build-up.

**Noise Reduction:** 23 dB

**Body Material:** Polyurethane Foam



SKU	Type
154-LL-1	Uncorded
154-LL-30	Corded

## MAXIMUM Disposable Earplugs

### Features:

- Contoured design easier to insert, resists tendency to back out of ear canal.
- Polyurethane foam enhances comfort, especially for long-term wear.
- Smooth, soil-resistant closed cell-foam skin prevents dirt build-up.
- Bell shape delivers maximum in-ear comfort.
- Also available in small size.

**Noise Reduction:** 33 dB

**Body Material:** Polyurethane Foam



SKU	Type
154-MAX-1	Uncorded
154-MAX-30	Corded

## MAXIMUM LITE Disposable Earplugs

### Features:

- Low pressure polyurethane foam expands gently for comfortable long-term wear.
- Contoured T-shape for easy insertion and wear.
- Smooth, soil-resistant closed cell-foam skin prevents dirt build-up.

**Noise Reduction:** 30 dB

**Body Material:** Foam



SKU	Type
154-LPF-1	Uncorded
154-LPF-30	Corded

## Pura-Fit® Foam Earplugs

### Features:

- Long length for easy fitting and removal.
- Bright color for easy compliance checks.
- Tapered design to fit the ear canal.
- Non-irritating, smooth surface for added comfort.



SKU	Noise Reduction	Body Material
507-6800	33 dB	Foam

## Rockets® Reusable Earplugs

### Features:

- Easy grip handle.
- Air bubble in the tip provides cushioned comfort.
- Easy insertion in any size ear canal.
- Pocket-Pak® carrying case for plug storage, slips easily into pocket.
- Washable and reusable.



SKU	Noise Reduction	Body Material
507-6405	27 dB	TPE

## SparkPlugs® Foam Earplugs

### Features:

- Extra soft foam and tapered design fit snugly and comfortable in the ear.
- Bright, fun colors provide easy compliance checks.



SKU	Noise Reduction
507-6604	33 dB

## EYE PROTECTION

### Safety Glasses



**KLEENGUARD™**

#### V30 Nemesis™ Safety Glasses

##### Features:

- Safety glasses feature a sporty, flexible, lightweight design.
- Wraparound frame has a base curve of 8 that extends the range of peripheral protection, as well as soft touch temples for comfort.
- Patented FLEX-DRY\* nose piece designed to be extremely flexible, to channel sweat away from the eyes, and to help prevent slippage down the nose for long-term comfort.
- Polycarbonate lenses provide 99.9% UVA/UVB/UVC protection.
- Includes neck cord for securing them, so that the glasses are ready to protect at a moment's notice.

**Lens Material:** Polycarbonate



SKU	Color	Lens Tint	Lens Coating/Shade
412-19644	Camouflage	Bronze	Uncoated
412-14481	Black	Blue Mirror	Mirror
412-22475	Black	Smoke	Anti-Fog
412-25659	Black	Amber	Uncoated
412-25671	Black	IRUV Shade 5	Uncoated; IRUV Shade 5
412-25676	Black	Clear	Uncoated
412-25679	Black	Clear	Anti-Fog
412-25685	Black	Indoor/Outdoor	Uncoated
412-25688	Black	Smoke Mirror	Mirror

#### V40 Hellraiser™ Safety Glasses

##### Features:

- Comfortable eye protection helps drive compliance, so these feature flex point temples for comfort and stability.
- Use them for men and women in a variety of work environments.
- Features single-lens wraparound protection that's designed for use at work or home.
- High-performance, durable polycarbonate lenses, which provide 99.9% UV protection (UVA/UVB/UVC).
- Available in a variety of styles.

**Lens Tint:** Smoke

**Lens Material:** Polycarbonate

**Lens Coating/Shade:** Uncoated

**Resistance:** 99.9% UV Protection (UVA/UVB/UVC)



SKU
412-25714



**KLEENGUARD™**

#### V50 OTG Safety Glasses

##### Features:

- Made with a nylon frame for strength, durability, and comfort and fits over most prescription glasses.
- See-through side shields provide side impact protection without blocking peripheral vision.
- Provides 99.9% UV protection (UVA/UVB/UVC).
- Available in a variety of styles.

**Lens Tint:** Clear

**Lens Material:** Polycarbonate

**Lens Coating/Shade:** Anti-Fog

**Resistance:** 99.9% UV Protection (UVA/UVB/UVC); Fog



SKU
412-20746

#### V60 Nemesis™ Rx Readers Prescription Safety Glasses

##### Features:

- Features a sporty, flexible, lightweight design.
- Wraparound frame has a base curve of 8 that extends the range of peripheral protection, as well as soft touch temples for comfort.
- Corrective lenses are hard coated for scratch resistance and longer life.
- Patented FLEX-DRY\* nose piece designed to be extremely flexible, to channel sweat away from the eyes, and to help prevent slippage down the nose for long-term comfort.
- Polycarbonate lenses provide 99.9% UVA/UVB/UVC protection.
- Includes neck cord for securing them, so that the glasses are ready to protect at a moment's notice.

**Lens Material:** Polycarbonate

**Lens Coating/Shade:** Hard Coated



SKU	Lens Tint	Diopter Strength
412-22516	Smoke	+1.5
412-22518	Smoke	+2.0
412-28621	Clear	+1.5
412-28624	Clear	+2.0



Smith &amp; Wesson®

## Elite® Safety Glasses

### Features:

- Designed to be both stylish and comfortable.
- Dual lens offer wrap-around protection, and the wide temple provides structural integrity and stability.
- Lightweight and feature a retro design that provides a stylish fashion statement.
- Provides 99.9% UV protection (UVA/UVB/UVC).
- Includes a Smith & Wesson® branded microfiber carry bag that doubles as a cleaning cloth.
- Available in a variety of styles.

**Lens Material:** Polycarbonate

**Lens Coating/Shade:** Uncoated



SKU

412-21303

## Safety Goggles



KLEENGUARD™

## V90 Shields with Monogoggle™ XTR OTG Goggles

### Features:

- The shield features the Monogoggle™ XTR OTG goggles, so there is no need to wear primary eye protection, like with other face shields.
- It's like having two products in one, since the face shield mask detaches from the splash goggles.
- Provides eye and full face protection from liquids and particles without the hassle of primary eye protection underneath a face shield mask.
- The shield has a D3 rating for droplet and splash protection.
- The goggles portion has a soft, pliable frame that conforms to the face for comfort, a cylindrical lens for increased visibility, indirect ventilation, and fit over most prescription glasses.
- The face shield mask is curved to conform to the shape of face for added protection and includes an adjustable strap.
- Polycarbonate lenses provide 99.9% UVA/UVB/UVC protection.
- Replacement goggle lenses available (30707, 30708).
- Available in a variety of styles.

**Lens Coating/Shade:** Anti-Fog

**Lens Material:** Polycarbonate Face Shield and Goggles

**Frame Material:** PVC Frame and Nose Piece

**Ventilation:** Goggles with Indirect Ventilation

**Strap Material:** Polyester/Rubber Weave



SKU

412-18629

Frame Color

Blue

Lens Tint

Clear

## FALL PROTECTION

### Lanyards

Honeywell  
MILLERAUTHORIZED  
DISTRIBUTOR

## Turbolite™ + Scorpion Fall Limiters

### Features:

- Available in 8 ft and 9 ft lengths.
- Combinations available for unit and lanyard ends, including steel rebar hook for concrete form work.
- Enhanced graphics, icons, and colors on UV-resistant scratch-resistant labeling.
- Designs aligned with Honeywell harnesses for mix and match protection.
- Abrasion-resistant webbing, integral swivel reduces lifeline twisting.

**Load Capacity:** 420 lb

**No. of Legs:** 1



SKU

493-MTL-QHS1-01/9FT

## FIRE, GAS & WATER PROTECTION

### Detectors

Honeywell  
THE POWER OF CONNECTED

## Clip Single-Gas Detectors

### Features:

- One button operation.
- Operates up to two years use without calibration, sensor replacement, or battery recharging/replacement.
- Wide angle flash which alerts simultaneously with audible and vibrating alarm.
- Automatic logging of the 35 most recent gas events.
- Compatible with IntelliDoX, Fleet Manager II Software.

**Sound Level:** 95 dBA

**Display Type:** LCD

**Power Source:** Lithium Battery

**Sensor Type:** Surecell

**Temp. Range:** -40° F - 122° F

**Run Time:** 2 years

**Includes:** Specified Sensor; Stainless Steel Alligator Clip; Concussion-Proof Housing; Test Cap; Instructions



SKU

126-BWC2-H

126-BWC2-M

Gas Type

Hydrogen Sulfide

Carbon Monoxide



## Fire Extinguishers



### ProLine™ Multi-Purpose Dry Chemical Fire Extinguishers

#### Features:

- Rechargeable.
- Designed to meet most commercial and industrial specifications.
- Tough impact resistant metal valve, handle and lever.
- Powder coated cylinder for corrosion protection.
- Easy-to-read gauge.

**Extinguishing Material:** Monoammonium Phosphate

**Fire Type:** Class A, B and C Fires

**Mounting Position:** Upright

**Operating Temp.:** -40° F - 120° F



SKU	Capacity Wt.	Operating Distance
408-21032142	5.5 lb	12 ft - 18 ft
408-21032149	10 lb	20 ft

## FIRST AID SAFETY

### Eye Wash



### Eye and Skin Flush Emergency Station/ Replacement Twin Bottles

#### Features:

- Eye flush kit with 2 bottles and wall mount station.
- Helps to clear eyes of foreign material such as dust, pollen, and chemicals and to relieve itching and burning.
- Bottles of sterile isotonic buffered solution for washing, flushing, and irrigating the eyes and skin.

**Capacity Vol.:** 16 oz

**Hose Material:** Plastic



SKU
579-24-102

## Honeywell

### Eyewash Wall Stations

#### Features:

- Mounts to wall with provided screws.
- Overhang protects bottles from dust and debris.
- Twist off, tamper resistant tabs prevent leaking and are easily removed in an emergency.
- Holds factory-sealed, sterile, preserved, buffered saline solution bottles firmly in place for easy access in an emergency.
- Simple, highly visible, operating instructions are provided on each unit.
- Durable, easy to clean plastic.



SKU	Capacity Vol.
714-32-000462-0000-H5	32 oz

### Personal Eye Wash Solutions

#### Features:

- Portable and readily available for use.
- Designed for flushing nuisance particles such as pollen, dust, sawdust, smoke as well as for immediate treatment.
- Bottles contain a buffered, saline solution that is sterile and superior to tap water for emergency eye care.
- Blow-fill-seal bottles with extended-flow nozzles are tamper resistant, yet easily removed in an emergency.
- Deliver drops or an irrigating stream of solution, depending on the squeeze pressure applied to the bottle.



SKU	Capacity Vol.
203-32-000455-0000-H5	32 oz

### Personal Eyewash Products

#### Features:

- Eysaline® solution delivery.
- Easy open top.
- User-controlled volume delivery.
- Quality assured manufacturing.



SKU	Capacity Vol.
203-32-000452-0000	4 oz

## First Aid Kits



## 10 Person First Aid Kits

## Features:

- 10 person first aid kit.
- ANSI Standard compliant.
- Durable plastic case.
- Water resistant gasket.

Length: 5.5 in

Width: 8.75 in

Height: 3 in



SKU	Case Material
101-10-9-FAKP	Plastic

## 25 Person First Aid Kits

## Features:

- 25 Person First Aid Kits, ANSI.
- Come with either a durable plastic or metal case.

Length: 10 in

Width: 7 in

Height: 3 in



SKU	Case Material
101-25-3-FAKP	Plastic

## Insect Repellents &amp; Sunscreens



## Sunscreen Lotions

## Features:

- A broad spectrum, SPF 30 sunscreen lotion in a convenient single-dose pouch.
- The non-greasy formula offers UVA/UVB protection and is PABA-free and oil-free.
- Contains added aloe vera gel and vitamin E.
- Passes lineman's glove test.
- Sweat and water resistant for up to 80 minutes.



SKU	Capacity Vol.
253-92101	1/4 oz

## HEAD/FACE PROTECTION

## Faceshields &amp; Visors



## Visors

## Features:

- Clear or shaded available.
- Durable and high-performance.

Length: 15-1/2 in

Height: 9 in

Thickness: 0.040 in

Lens Material: PETG



SKU	Lens Coating/ Shade	Binding	Style	Color
101-3440-U-CL	Clear	Unbound	Unbound Visor	Clear
101-3442-B-DG	Dark Green	Aluminum Bound	Bound Visor	Dark Green

Honeywell  
AUTHORIZED DISTRIBUTORHigh Performance®  
Faceshield Windows

## Features:

- Injection molded from propionate.
- Heat and scratch resistant.
- Fits easily and comfortably over required protective spectacles or respirators.

Lens Material: Propionate

Thickness: 0.06 in



SKU	Lens Coating/ Shade	Used With	Style	Color	Height
280-4178CL	Clear	F-400, F-500, FH-66, FM-70, FM-71 Series	Wide View	Clear	8 in
280-4178IRUV5	Shade 5	F-400; F-500; FH-66; FM-70; FM-71 Series; 400500667071	Wide View	Green	8 in
280-4199CL	Clear	F-400, F-500 & FH-66 Series; 40050066	Extended View	Clear	9 in

# THE FUTURE OF ERGONOMIC SAFETY

The Next Generation of Premium Full Body Harnesses



The Miller H700 full-body harness helps to ensure workers stay compliant, protected, comfortable and productive when working at height thanks to scientifically-based technological advances that focus on user comfort, safety and intuitiveness. The product is available in multiple versions enabling user protection in virtually any work environment.



**Honeywell**



## Hard Hat &amp; Cap Parts &amp; Accessories

**Honeywell**  
AUTHORIZED  
DISTRIBUTOR

## High Performance® Hard Hat Faceshield Headgears

### Features:

- Made from Noryl®, the same material used in our welding helmets.
- Exceptionally lightweight and comfortable.
- Allows space for air circulation to prevent fogging.
- Accommodates a full selection of standard size windows.

**Material:** Noryl®



SKU	Used With	Suspension
280-F400	4178CL; 4178DGN; 4178IRUV3; 4178IRUV5; 4199CL; 4199DGN; 4199IRUV3; 4199IRUV5; 4178IRUV8; 4178TVGY; S178; 4199GDTVGY; S199	Ratchet

**MSA**  
The Safety Company

## Fas-Trac® III Replacement Suspensions

### Features:

- Ratchet suspension and flush rear lug attachments eliminate pressure points for additional wearer comfort.
- Three levels of nape strap adjustment ensure a customized fit.
- Graspable ratchet with ultra-smooth rotation and steadfast hold.

**Material:** Plastic/Nylon



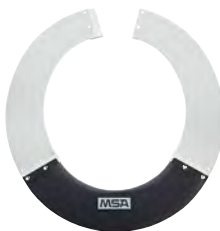
SKU	Used With	Suspension	Color
454-10148708	V-Gard®; V-Gard 500; V-Gard GREEN; SmoothDome®	4-Point Ratchet	Black
454-10153385	MSA Skullgard® Helmets	4-Point Ratchet	Gray

## Sun Shields

### Features:

- Front portion is Lexan tinted.
- Protects wearer's ears and neck from sun rays.
- Extends brim all the way around.

**Material:** Polyurethane



SKU	Used With	Suspension
454-697410	V-Gard	Attaches to Brim

## Hard Hats &amp; Caps

**Honeywell**  
AUTHORIZED  
DISTRIBUTOR

## SuperEight® E1 Hard Hats

### Features:

- Dissipates force on impact by reducing it to smaller increments and spreading it over a greater area.
- The exclusive smooth crown design contains a technically advanced suspension with eight load bearing points to stabilize and balance the hat or cap during everyday wear.

**Material:** Thermoplastic

**Size Group:** One Size Fits Most



SKU	Suspension
280-E1RW01A000	8-Point Ratchet

## SuperEight® E2 Series Hard Caps

### Features:

- Energy control system dissipates force by reducing it into smaller increments and spreading it over a wide area.
- The exclusive smooth crown design contains a technically advanced suspension with eight load bearing points to stabilize and balance the hat or cap during everyday wear.

**Material:** Thermoplastic

**Size Group:** Standard



SKU	Suspension
280-E2RW01A000	8-Point Ratchet

**MSA**  
The Safety Company

## Skullgard® Protective Caps and Hats

### Features:

- Strong, protective hats offer outstanding protection in hot, dangerous industries.
- Tested to radiant heat loads producing temperatures up to, but not exceeding, 350F.
- Smooth crown allows easy use of MSA welding equipment.
- Heavy duty construction produces a sturdy, reliable product for long-lasting use.

**Material:** Phenolic

**Type:** Non-Slotted

**Size Group:** Standard; 6-1/2 to 8

**Suspension:** Fas-Trac® Ratchet



SKU
454-475395
454-475407





## V-Gard® Protective Hats

### Features:

- Convenient caps and hats provide comfortable, lightweight protection.
- Polyethylene shell provides superior impact protection.
- Available with Fas-Trac® III or Staz-On® suspension.

**Adjusting Method:** Ratchet

**Material:** Polyethylene

**Size Group:** Standard; 6-1/2 to 8



SKU
454-475369

## V-Gard® Slotted Hard Hat Caps

### Features:

- Comfortable, durable protection.
- Polyethylene shell provides superior impact protection.
- Iconic V design has been a mainstay for many years on even the toughest worksites.

**Adjusting Method:** Ratchet

**Material:** Polyethylene

**Size Group:** 6-1/2 in to 8 in; Standard



SKU	Suspension
454-475358	Fas-Trac® III

## Welding Helmet Parts & Accessories



## Cover Lens

### Features:

- Convenient protective cover lens is resistant to abrasion, pitting, spatter, chemicals and solvents.
- Optically correct and balanced.
- Provides superior welding lens protection.

**Window Size:** 2 in x 4.25 in

**Lens Coating/Shade:** Clear



SKU	Material
901-SP-1	70% CR-39 Plastic
901-SP-2	100% CR-39 Plastic



## Glass Filter Plates

### Features:

- Best Welds filter plates offer ultimate protection against ultraviolet and infrared rays present in the welding environment.
- Precision ground and edged to allow a safe and proper fit.
- Precisely shaded and optically correct.

**Window Size:** 2 x 4-1/4 in

**Material:** Hardened Glass



SKU	Lens Coating/ Shade
901-932-105-10	10

## Safety Plate

### Features:

- Safety plate provides strong impact resistance for added safety.
- Optically correct and balanced.
- Light-weight.

**Material:** Polycarbonate

**Lens Coating/Shade:** Clear

**Style:** Rectangular



SKU	Window Size
901-932-440	2 in x 4-1/4 in
901-932-442	4-1/2 in x 5-1/4 in



AUTHORIZED DISTRIBUTOR

## Speedy-Loop™ Mounting Systems

### Features:

- Easy on/off system for mounting welding helmets onto protective caps.
- Fully adjustable.

**Material:** Plastic

**Size:** Adjustable



SKU	Used With
280-5000-H5	Fibre-Metal Protective Caps



# THE V-Gard C1™ HARD HAT

---

**A higher degree of heat stress protection.** The patent-pending ReflectIR™ Thermal Barrier works to block the energy of the sun, keeping the inside of the hard hat up to 20°F (11°C) cooler, reducing the risk of heat stress. Find where to buy at [www.msasafety.com/vgardc1](http://www.msasafety.com/vgardc1).

**MSA**  
The Safety Company



## HEAT STRESS PROTECTION

### Activity Drinks



### G Series 02 Perform® Thirst Quencher Instant Powders

#### Features:

- Hydrates with electrolytes that help them replace the carbs, electrolytes and fluids they lose when they sweat.
- Carbohydrates help stimulate rapid fluid absorption and fuel the active body.

**Package Yield:** 2.5 gal



SKU	Flavor
308-03944	Fruit Punch; Lemon-Lime; Orange; Frost Riptide Rush
308-03969	Lemon-Lime
308-03970	Orange
308-33673	Frost Riptide Rush
308-33677	Glacier Freeze
308-33691	Fruit Punch

### G Zero Powder Sticks

#### Features:

- Gatorade® G Zero in convenient single serve sticks.
- Sugar-free G Zero packs are designed for those on the go, simply add to a 20 oz bottle of water.
- Gatorade® G Zero is an ideal electrolyte solution for those interested in maintaining a ketosis state.

**Flavor:** Glacier Freeze



SKU	Package Yield
308-04457	16.9 oz

### Powder Sticks

#### Features:

- Powdered mix contains the same electrolyte formula found in the original Gatorade.
- The refreshing choice when you need to replace electrolytes lost from sweat while performing rigorous physical activity.
- Take these convenient packets with you anywhere

**Package Yield:** 16.9 oz



SKU	Flavor
308-04702	Fruit Punch
308-04701	Orange
308-04700	Lemon Lime



### Qwik Stik® ZERO Sugar

#### Features:

- Great-tasting sugar-free electrolyte replacement.
- Ideal for diabetics and carb-conscious consumers.

**Package Yield:** 20 oz



SKU	Flavor
690-159060099	ZERO Sugar Strawberry Lemonade
690-159060100	ZERO Sugar Orange
690-159060101	ZERO Sugar Mixed Berry
690-159060102	ZERO Sugar Fruit Punch
690-159060103	ZERO Sugar Lemonade
690-159060106	ZERO Sugar Lemon-Lime
690-159060107	ZERO Sugar Grape
690-159060119	ZERO Sugar Fruit Punch; ZERO Sugar Mixed Berry; ZERO Sugar Orange; ZERO Sugar Strawberry Lemonade

### Squeeze® Freezer Pops

#### Features:

- Great way to cool down the body during hot or fatiguing work situations.
- Just freeze and serve to administer a tasty way to provide electrolytes to any work crew.
- Formulated to be absorbed significantly faster than water, allowing the body to replenish electrolytes and minerals for proper hydration.

**Flavor:** Cherry; Grape; Lemon-Lime; Mixed Berry; Orange



SKU	Package Yield
690-159200201	3 oz

### Sweat Bands



### Headgear Sweatbands

#### Features:

- Individually packaged.
- Hook & loop closure allows the fit onto most major brand headgear.
- Sweat absorbent air cushioned layer lined with 100% fleece cotton.

**Used With:** Suspension Headgear

**Strap Type:** Hook and Loop



SKU	Material
101-SB320V	Fleece Cotton

## LOCKING DEVICES

### Lockouts & Hasps



#### Portable Lockout Kits

##### Features:

- Kit includes padlocks and electrical focused high-use products.
- Supplies store securely in a rugged toolbox to help keep important lockout devices and padlocks together.
- For added individual worker convenience, padlocks are supplied keyed alike.

**Width:** 25/32 in Body -

**Shackle Length:** 1-1/4 in

**No. of Padlocks:** 4

**Includes:** (1) S1017 Durable Lockout Toolbox; (3) 410KARED Zenex™ Padlocks; (1) 7C5RED Circuit Breaker Padlock; (1) 427 Red Labeled Snap-On Lockout Hasp; (3) 493B Circuit Breaker Lockouts; (2) 491B Circuit Breaker Lockouts; (1) 496B Wall Switch Cover; (1) 497A Do Not Operate Laminated Safety Tags (12-pack)

**Depicted Text:** Danger Do Not Operate; Danger Locked Out Do Not Remove



SKU
470-1457E410KA

#### Zenex™ Thermoplastic Safety Lockout Padlocks

##### Features:

- Designed exclusively for lockout tagout applications.
- Durable, lightweight, non-conductive Thermoplastic lock body.
- Customize on-site with permanent, write-on labels.
- Compliance with "One Employee, One Lock, One Key" directive.
- High security, reserved-for-safety cylinder.
- Key retaining, ensures that padlock is not left unlocked.
- 6-pin tumbler for Keyed Alike (KA), Keyed Different (KD), and Master Keyed (MK) styles.
- Choose from 1-3/4 inch (406 and 410) or 3 inch (411) body heights.
- Dielectric (406) options available.



SKU	Type
470-410RED	6-Pin Tumbler Cylinder

## RESPIRATORY PROTECTION

### Cartridge Respirator Parts & Accessories



#### 3M™ Particulate Filter

##### Features:

- Lightweight and easy to breathe through.
- Bayonet compatibility allows use with many 3M™ half and full facepieces and certain 3M™ Scott™ full facepieces.
- Assortment of filters available for a wide range of applications.

**Filtration Grade:** P100



SKU	Resistance
142-2091	Oil and Non-Oil Based Particles
142-2097	Nuisance Level Organic Vapor

#### 3M™ Organic Vapor Cartridge 6001

##### Features:

- Swept-back design allows an enhanced field of view and comfort.
- Bayonet compatibility allows use with many 3M™ Half and Full Facepiece Respirators.
- Wide range of applications reduces inventory needs.
- Simple installation and usage requirements reduces training requirements.



SKU	For Model
142-6001	3M™ Half/Full Facepieces 6000, 6500, 7000, 7500, 7800S, and FF-400 Series with bayonet filter holders

#### 3M™ Organic Vapor Cartridge/Filter

##### Features:

- Unique design for enhanced comfort and visibility.
- Particulate filter is permanently attached to cartridge for easy, one-step assembly.

**Filtration Grade:** P100



SKU	Resistance
142-60921	Organic Vapor; Asbestos; Mold; Silica
142-60923	Acid Gases; Organic Vapors



## Particulate Filters

### Features:

- Can be used alone with filter holder and cover (N750037) or with any Honeywell North N-series cartridge (with N750036).
- Low profile with curved top will not catch on pipes or other objects.

**Filtration Grade:** P100



SKU	For Model
068-7580P100	5500, RU8500 and 7700 Half Masks; 5400, RU6500 and 7600 Full Facepieces

## Cartridge Respirators



## 3M™ Full Facepiece Reusable Respirator

### Features:

- Unique center adapter directs exhaled breath and moisture downward, and helps reduce debris from depositing in the valve.
- Smooth surface allows for quick and easy cleaning.
- Large lens provides a wide field of view and excellent visibility.
- 3M™ Cool Flow™ Valve provides cool, dry comfort.
- Lightweight well-balanced design and silicone face seal for enhanced comfort and durability.

**Body Material:** Silicone; Thermoplastic Elastomer



SKU	Size Group
142-6800	Medium
142-6900	Large

## 3M™ Half Facepiece Reusable Respirator

### Features:

- Half facepiece drop down.
- Used with 2000, 6000 and 7000 Series filters and cartridges.
- Remarkably comfortable with soft, lightweight facepiece and the easy-to-adjust head straps.
- Reusable.
- Just dispose of the cartridges/filters when used to capacity.

**Body Material:** TPE



SKU	Size Group
142-6200	Medium
142-6300	Large

## 7700 Series Half Mask Respirators

### Features:

- Silicone facepiece conforms to facial features.
- Contoured sealing flange and cradle suspension system eliminates discomfort.
- Cradle suspension system allows the facepiece to seal evenly on the face without creating pressure points.

**Body Material:** Silicone



SKU	Size Group
068-770030M	Medium
068-770030L	Large

## Disposable Respirators



## 3M™ Particulate Respirator 8210

### Features:

- Two-strap design with single point attachment helps provide a secure fit.
- Adjustable noseclip reduces eyewear fogging and helps ensure a better fit and seal.
- Lightweight construction enhances worker comfort and wear time.
- Patented filter media with advanced electrostatically charged microfibers help make breathing easier and cooler for enhanced user comfort.

**Size Group:** One Size

**Suspension:** Two Fixed Straps



SKU	Usage	Includes
142-8210	Grinding; Sanding; Sweeping; Bagging; Other Dusty Operations	Adjustable Noseclip
142-8210V	Construction; General Manufacturing; Mining; Oil & Gas; Transportation	3M™ Cool Flow™ Valve; Adjustable Noseclip
142-8511	Grinding; Sanding; Sweeping; Bagging; Other Dusty or Arid Operations	3M™ Cool Flow™ Valve; M Noseclip

**MOLDEX****2200 Series N95 Particulate Respirators****Features:**

- For humid and/or dusty work environments, this is a mask that fits the bill.
- Dura-Mesh® shell stands up to extreme heat environments while providing better protection to the filter.
- Contoured face seal and molded nose bridge deliver enhanced comfort, particularly during extended periods of wear.

**Size Group:** Medium/Large**Suspension:** 2-Strap

SKU
507-2200N95

**2300 N95 2-Strap Particulate Respirators with Exhale Valve****Features:**

- Exhale valve lets workers breathe easy and stay cool.
- Dura-Mesh® shell resists collapsing in heat and humidity.
- Molded nose bridge seals easily without a metal noseband.
- Facepiece is naturally contoured for less pressure.
- Straps are securely attached so they don't break at the seal.
- Softspun® lining for increased comfort and durability.
- Soft foam nose cushion for added comfort.
- Available in three sizes to fit more workers and increase OSHA compliance.

**Size Group:** Medium/Large

SKU
507-2300N95

**SAFETY STORAGE****Safety Can Parts & Accessories****Funnel Attachments for Type I Steel Safety Cans****Features:**

- Economical way to aid pouring into smaller openings.
- Bolt-on funnel with galvanized hose.
- For Type I steel cans only.

**Dia.:** 0.5 in

SKU	Material
400-11202Y	Polyethylene

**Safety Cans****Type I Safety Cans****Features:**

- Electric seam weld joins top and body.
- Stainless steel flame arrestor.
- Sturdy 16 gauge shock rim for bottom support.

**Dia.:** 12-1/2 in**Height:** 15-1/2 in**Material:** Galvanized Steel**Resistance:** Chemicals

SKU	Capacity Vol.
258-UI50FS	5 gal

**Type I Steel Safety Cans****Features:**

- Color coding avoids accidents.
- Self-closing lid controls spills.
- Leakproof, auto-venting lid prevents explosion.
- Available with funnel for cans 1 gal or larger.
- Cans up to 1 quart feature a trigger-release handle, while larger capacities have a swinging handle to greatly ease carrying of heavier loads.

**Dia.:** 11.75 in | **Height:** 16.875 in**Material:** 24-ga Galvanized Steel | **Capacity Vol.:** 5 gal

SKU	Type	Color	Includes
400-7150100	Gas	Red	Stainless Steel Flame Arrestor; Swinging Handle
400-7150110	Gas	Red	Poly Funnel; Stainless Steel Flame Arrestor; Swinging Handle
400-7150200	Diesel	Yellow	Stainless Steel Flame Arrestor; Swinging Handle

**Type II AccuFlow™ Safety Cans****Features:**

- Color coding avoids accidents.
- Stainless steel flame arrestor prevents flashback ignition.
- Easy-to-use Safe-Squeeze® trigger for controlled pouring.
- Two-openings, one for targeted pouring, one with ergonomically designed lift-lever for easy filling.

**Dia.:** 11.75 in**Height:** 17.5 in | **Hose O.D.:** 1 in**Capacity Vol.:** 5 gal

SKU	Color
400-7250130	Red
400-7250230	Yellow

## TRAFFIC SAFETY

### Safety Tapes



#### Economy Barrier Tape

##### Features:

- Sturdy safety tape.
- Repeat wording clearly identifies hazard.
- Bright colors and Bolder Print to attract attention.
- Durable, yet easily disposable.

**Width:** 3 in

**Length:** 1000 ft

**Material:** Polyethylene



SKU	Depicted Text	Color
101-R10003	Danger	Red
101-Y10003	Caution	Yellow



#### Safety Barricade Tapes

##### Features:

- Safety tapes indicating warning or danger areas.
- Large bold lettering is easy to read at a distance.
- Durable plastic material remains pliant in cold weather.

**Width:** 3 in

**Length:** 1,000 ft



SKU	Depicted Text	Color	Thickness
272-71-1001	Caution	Yellow	2 mil
272-77-1001	Caution	Yellow	2 mil
272-77-1004	Danger	Red	4 mil

## FILLER METALS

### Welding Stick Electrodes



#### Mild Steel Electrodes

##### Features:

- Excellent arc starting and stability.
- For best performance, store in rod oven at recommended temperature.

**Material:** Carbon Steel

**Length:** 14 in



SKU
900-7018-18X50

## GAS CUTTING & WELDING

### Outfits



#### G-150-J-CPT Totes with Tanks

##### Features:

- Designed with a patented and molded plastic carrying case.
- Ergonomic handle.
- Patented balance design with small footprint.
- Built-in storage compartments.



SKU	Gas Type
341-0384-0948	Acetylene

### Regulators & Flowmeters



#### VN Series HVAC Nitrogen-Purging Regulators/Flowmeters

##### Features:

- Hybrid design—regulator and flowmeter all in one.
- Easy-to-read nitrogen cylinder content gauge with preset flow rates.
- Heavy-duty brass body designed for rugged field use.
- No adaptors needed.

**Gas Type:** Nitrogen

**Operating Pressure:** - 500 psi Test; 3000 psi

**Connection Type:** CGA-580

**Outlet Size:** 1/4 in

**Outlet Type:** Male SAE Flare



SKU
312-VN-500

## Tips & Nozzles



### Victor® Style 1-Pc Acetylene Cutting Tips - 1-101 Series

#### Features:

- One-piece tip for acetylene-oxygen.
- Medium preheat for general hand and machine cutting.
- Fits 2460, CA 1060, ST, SST, 1400C machine torches.

**Orifice:** 0.060 in

**Material:** Copper

**Gas Type:** Acetylene; Oxygen

**Process:** General Hand or Machine Cutting

**Used With:** 2460; CA 1060; ST; SST; 1400C

**Head Type:** Cutting torch



SKU	Type	Tip Size Symbol
900-1-101-2	1-Pc Cutting Tip	2

## SOLDERING & BRAZING

### Soldering/Brazing Torches



### High Heat Torch

#### Features:

- Work faster and more efficiently with maximum heat.
- Ideal for job site projects including large soldering, brazing, heat treating and light welding.
- Large, optimized swirl flame provides maximum heat output.
- Cast aluminum body for durability.
- Pressure regulated for consistent performance when tilted or momentarily inverted.
- Run-lock button keeps the torch lit for continuous use.

**Process:** Brazing; Heat Treating; Large Diameter Soldering

**Includes:** High Heat Torch



SKU	Gas Type	Body Material
189-361524	MAPP® (Methyl Acetylene-Propadiene)	Cast Aluminum

## TORCH & WEED BURNERS



### Hotspotter All Purpose Propane Torches

#### Features:

- Flame tools are for exterior maintenance and repair.
- Hotspotter is an all-purpose propane torch that delivers at full cylinder pressure with no smoke and no fumes.
- Ergonomic handle with adjustable trigger.
- Hooks up to standard 20-pound propane tank.

**Gas Type:** Propane

**Handle Length:** 31 in

**Hose Length:** 10 ft

**Output Power:** 500000 Btu



SKU	Type	Includes
312-WB-101	Heavy-Duty Open Flame Torch	Brass Propane Tank Adaptor; Brass Flow Control Shut-Off Valve; Spark Ignitor; Cast Iron and Steel Nozzle; Hose
312-WB-102	Medium-Duty Open Flame Torch	Brass Propane Tank Adaptor; Brass Flow Control Shut-Off Valve; Spark Ignitor; Welded Tube Nozzle; Hose

## WELDING & CUTTING ACCESSORIES

### Anti-Spatter & Chemicals



### Anti-Spatters

#### Features:

- Helps protect MIG gun nozzles, contact tips, accessories and all welding zones during single- and multi-pass welding.
- Non-flammable.
- Reduces spatter build-up on MIG nozzles, prevents spatter adhesion.
- Heat-resistant to withstand high temperature use.
- Paint compatible.
- Contains no silicones, no fluorocarbons.

**Chemical Compound:** Solvent-Based



SKU	Capacity Vol.
905-620-160Z	16 oz



## Centering Heads

CURV-O-MARK®

### Centering Heads

#### Features:

- Aids in setting of center lines, establishing angles and marks for butt-ins, location points inside pipes and tanks, laying out keyways, and measuring declivity.
- The Y-type head is fitted with an adjustable dial bubble protractor (DSL).
- Use a tapping hammer to operate the hardened centering pin.

**Head Type:** Y-Type

**Type:** #6 Standard Centering Head; DSL



SKU	Pipe Cap.	Head Width
430-14775	1/2 in - 4 in	4 in



### Magnetic Centering Heads with Vial

#### Features:

- One piece Y-shaped body design with magnetic legs.
- Built-in dial with 2-1/2° increments that turns 360°.
- Hardened center punch marks set position by taping with a hammer.
- Used to establish and mark a centerline at any angle around circumference on a pipe or tank or as a protractor level.
- Excessive heat can damage magnets.
- Keep magnets away from sensitive electronic devices.



SKU	Pipe Cap.	Size
496-53025-M	1 in - Larger	Small
496-53076-M	6 in - Larger	Medium

## Cutting & Burning Guides

CURV-O-MARK®

### Wrap-A-Round® Rulers

#### Features:

- Feature metric scale and pitch chart.
- Resists heat and cold.

**Width:** 3.88 in



SKU	Size Group	Length	Pipe Capacity
430-14752	Medium	4 ft	3 in - 6 in
430-14753	Large	6 ft	3 in - 10 in



### Wizard Wraps

#### Features:

- Wizard wrap, made from a non-asbestos, heat resistant material, has a nice thick edge for easier more accurate marking and helps keep your soapstone from slipping.
- 36" tape measure printed on the medium & large Wizard-limits the need for an extra tape measure.
- Circumference & Quartering scale printed on every wrap-limits the need for calculation.
- Packaged in a durable, reusable container that will hold up in your tool box.

SKU	Size Group	Width	Length	Resistance	Pipe Capacity
496-WW-16	Small	2-5/8 in	30 in	Gasoline; Heat; Kerosene; Oil; Sea Water; Water	1 in - 6 in
496-WW-17	Medium	3-7/8 in	60 in	Gasoline; Heat; Kerosene; Oil; Sea Water; Water	2 in - 16 in
496-WW-17A	Large	5-1/4 in	120 in	Heat	6 in - 30 in
496-WW-19	Extra Large	7 in	180 in	Gasoline; Heat; Kerosene; Oil; Sea Water; Water	12 in - 48 in

## Cylinder & Caps



### MAP-Pro™ Hand Torch Cylinders

#### Features:

- Ideal for medium to heavy soldering and brazing.
- Flame temperature in air is 3600 degrees F.

**Wt.:** 1.9 lb



SKU	Gas Type
870-332477	MAP-Pro™



**WORTHINGTON**  
CYLINDERS  
A Worthington Industries Company

## TX 9 Propane Cylinders

### Features:

- Ideal for general soldering.
- Flame temperature in air is 3450 degrees F.

**Capacity Vol.:** 14.1 oz

**Wt.:** 1.9 lb



SKU

870-304182

## Rod Holders



## Rod Storage Tubes

### Features:

- Easy way to store and organize all of your filler metals properly.
- 1/8-inch nominal wall thickness for superior strength and durability.
- Neoprene seal keeps your rods air and water tight.
- Each rod storage tube comes with a key tag to identify the contents.
- Made of high impact polyethylene.
- Available in a variety of lengths and colors.
- Increase tube to accommodate 1-meter rods with 3-inch extension (BW36-BLA-EXT) sold separately.



SKU

900-BW14-BLU

Capacity Wt.

10 lb

## Spark Lighter & Flints

## SL-E Spark Lighters

### Features:

- Single flint lighter.
- Consistent, reliable sparking.
- Long lasting.



SKU

900-SL-E

**SHURLITE**

## Flints

### Features:

- Economically priced and designed for any of the Shurlite® family of flint lighters.
- Guaranteed to fit perfectly on Shurlite® lighters.
- Guaranteed to remain seated in the flint holder.
- Larger size for longer life.



SKU

322-3011X

## Shurlite® Spark Lighters

### Features:

- Strong frame and rugged design.
- Options available for flat file with round cup design, single-flint round, triple-flint, and Shoot-a-lite flat pistol shaped spark lighters.



SKU

322-3001

Type

Universal Single-Flint Round File Spark Lighter; Flint Easily Replaced; Round File Spins; Square Hood

322-4501

Three-Flint Spark Lighter; Heavy-Duty Steel Band; Strong Frame

## Tip Cleaners

**WYPO**

## Tip Cleaner Sets

### Features:

- Uniform ridges wipe and polish the orifice wall.
- Tapered ends allows smooth easy entry without scratching.
- Attractive aluminum case with a contained spool assembly.
- Smooth leader pilot.
- Tangle-free closed loops.

**Dia.:** 0.014 in; 0.018 in; 0.021 in; 0.024 in; 0.028 in; 0.032 in; 0.035 in; 0.037 in; 0.039 in; 0.042 in; 0.048 in; 0.055 in; 0.062 in

**Size Group:** 6 to 26

**Used With:** Welding Tips



SKU

326-STANDARD

Material

Stainless Steel

Includes

(13) Cleaners; Case; File

## Welding Cables & Power Cables



### Welding Cables

#### Features:

- Custom lengths available.
- Custom assemblies available.
- Resistant to oil, chemicals, and solvents.

**Amps:** Consult Ampacity Chart

**Temp Range:** -50° C (-58° F) - 105° C (221° F)

**Jacket Material:** EPDM

**Number of Conductors:** 1

**Insulation Thickness:** 0.08 in

**Voltage:** 600 V

**Insulation:** EPDM

**Conductor Material:** Stranded Copper



SKU	Cable/Wire Description
911-1/0-500	1/0 AWG x 500 ft
911-2/0-500	2/0 AWG x 500 ft

## Welding Hoses

### Grade R Twin-Line Welding Hoses

#### Features:

- High quality Grade R twin-line welding hoses.
- Green hose carries oxygen to welding equipment.
- Red hose carries acetylene.
- Hose cover resists oils.

**Pressure:** 200 psi

**Hose I.D.:** 1/4 in

**Gas Type:** Acetylene Only



SKU	Length
907-LB504	50 ft
907-LB1004	100 ft

# SPECIAL ORDERS

## Don't see it here? Just ask.





# AMECO®

## The Site Services® Company

Tool & Supply Programs | Tool & Supply Rentals & Sales | Construction Equipment  
Winches & Engineered Services | Integrated Scaffold Solutions | O&M Site Services

AMECO.com

Call Toll Free: 800.333.2151

Submit an online inquiry: [AMECO.com/contact](https://www.ameco.com/contact)